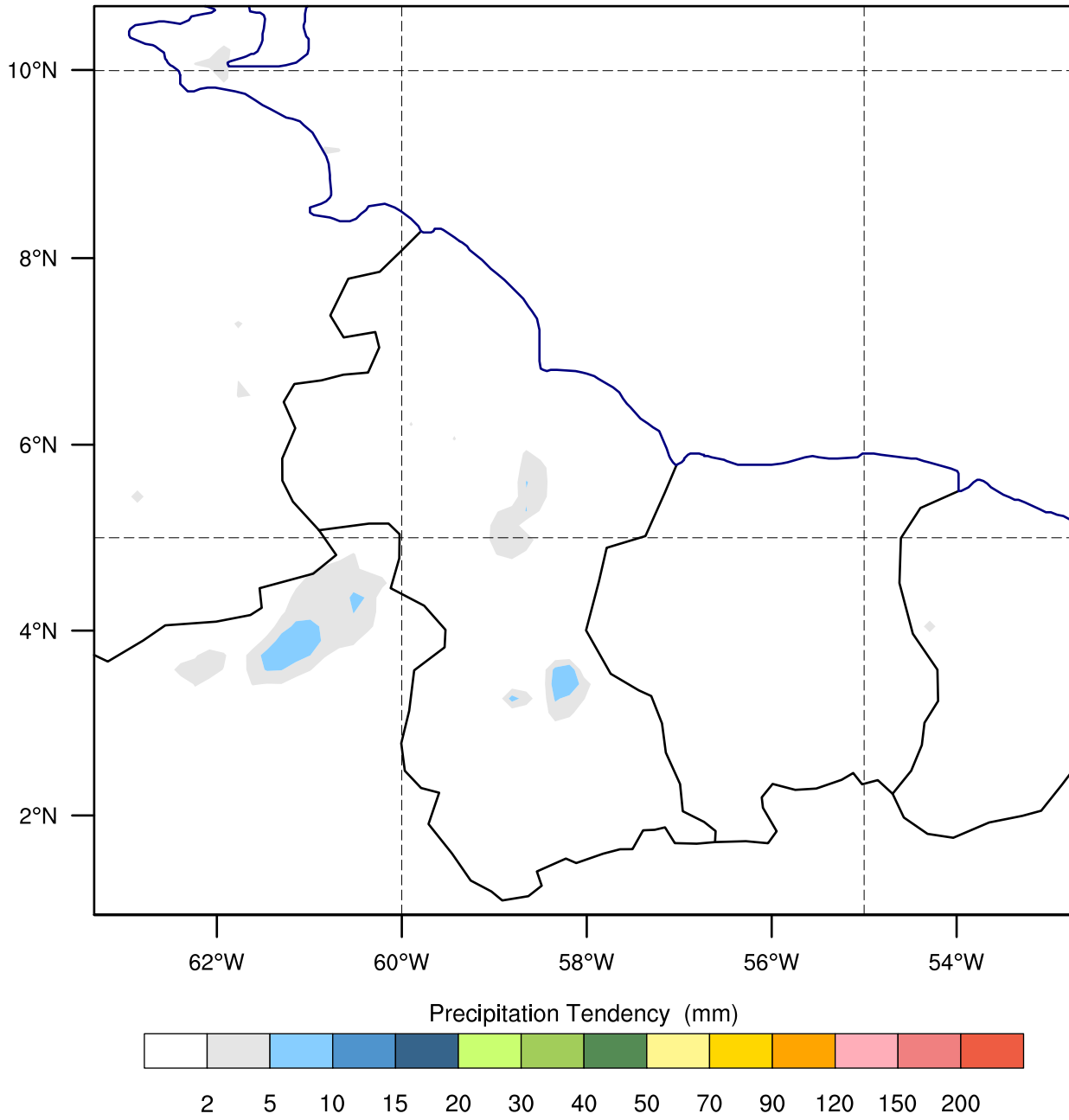


GUYANA HYDROMET SERVICE WRF

Init: 2017-07-07_00:00:00
Valid: 2017-07-07_03:00:00

Precipitation Tendency from 2017-07-07_00:00:00 to 2017-07-07_03:00:00 UTC time -4 for localtime (mm)

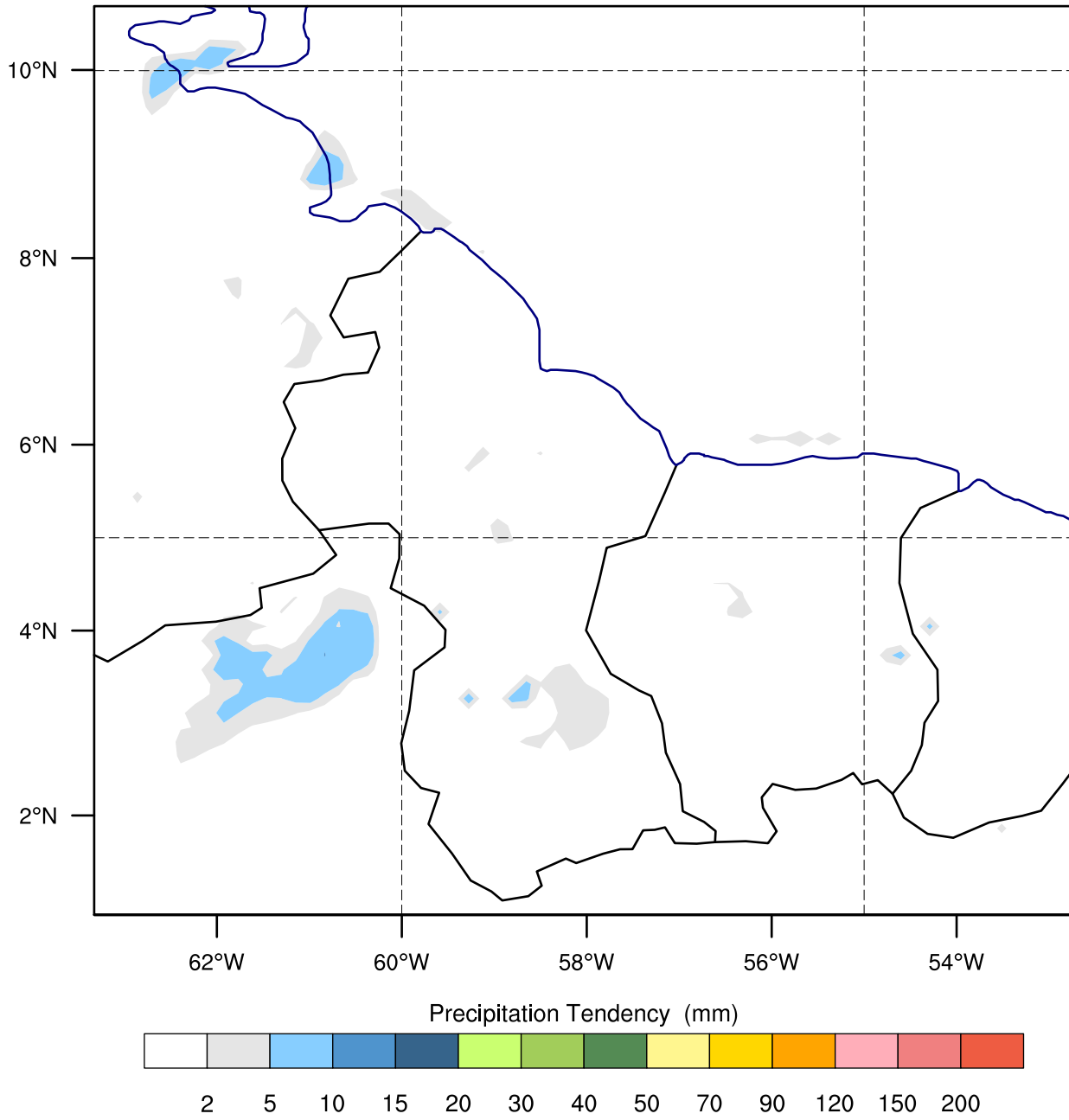


OUTPUT FROM WRF V3.7 MODEL
WE = 70 ; SN = 65 ; Levels = 30 ; Dis = 15km ; Phys Opt = 14 ; PBL Opt = 1 ; Cu Opt = 1

GUYANA HYDROMET SERVICE WRF

Init: 2017-07-07_00:00:00
Valid: 2017-07-07_06:00:00

Precipitation Tendency from 2017-07-07_03:00:00 to 2017-07-07_06:00:00 UTC time -4 for localtime (mm)



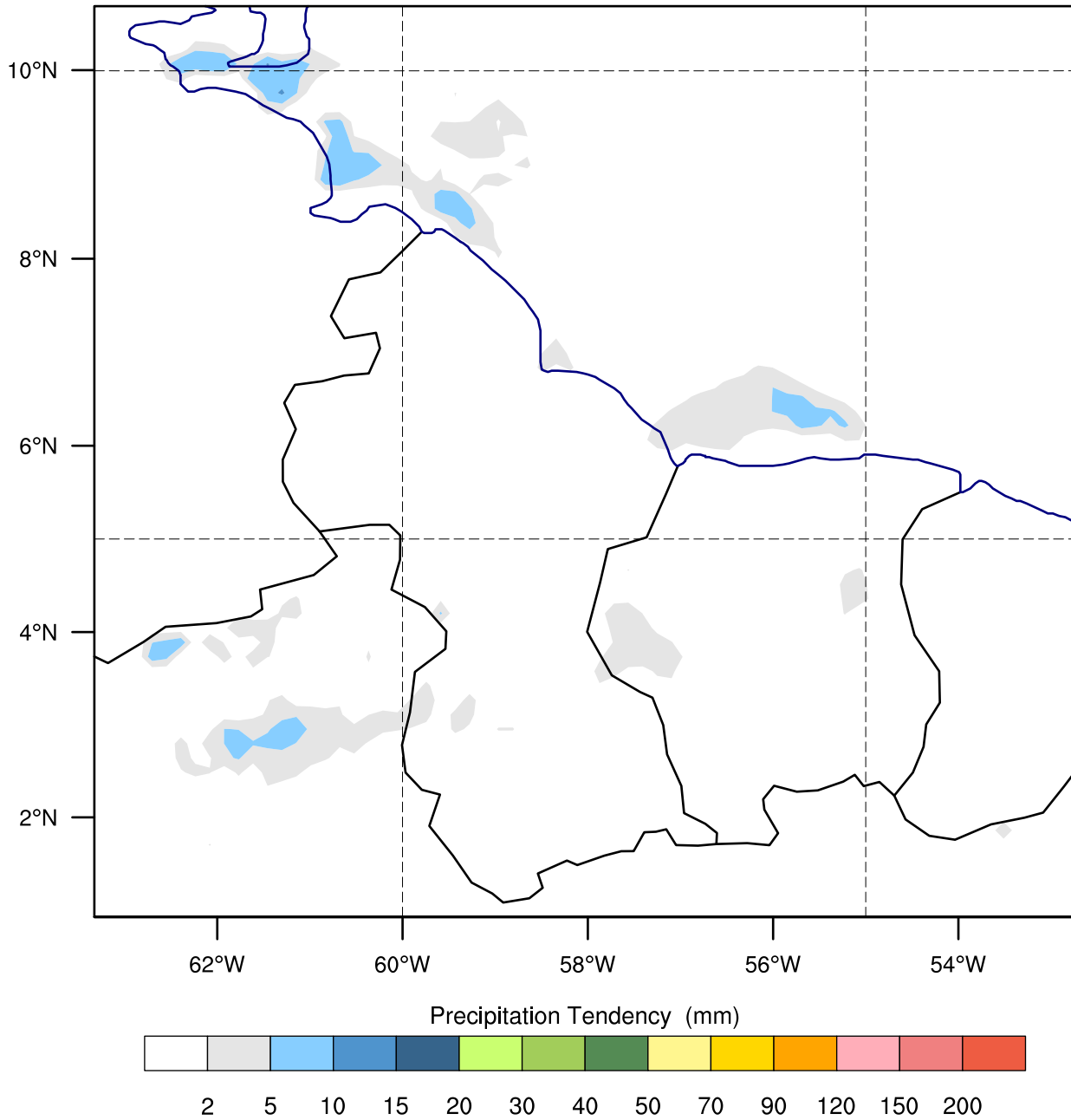
OUTPUT FROM WRF V3.7 MODEL
WE = 70 ; SN = 65 ; Levels = 30 ; Dis = 15km ; Phys Opt = 14 ; PBL Opt = 1 ; Cu Opt = 1

GUYANA HYDROMET SERVICE WRF

Init: 2017-07-07_00:00:00

Valid: 2017-07-07_09:00:00

Precipitation Tendency from 2017-07-07_06:00:00 to 2017-07-07_09:00:00 UTC time -4 for localtime (mm)



OUTPUT FROM WRF V3.7 MODEL

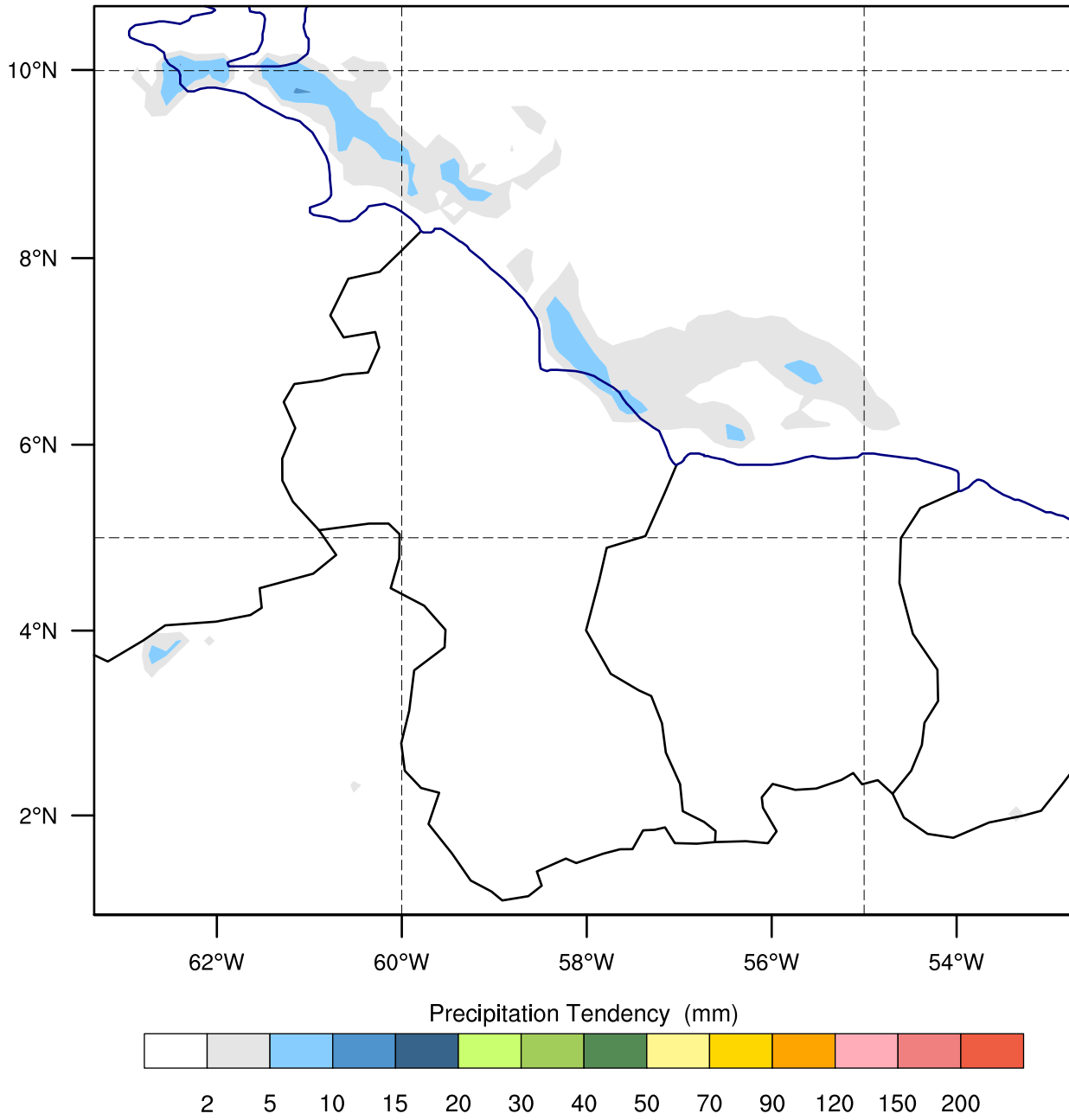
WE = 70 ; SN = 65 ; Levels = 30 ; Dis = 15km ; Phys Opt = 14 ; PBL Opt = 1 ; Cu Opt = 1

GUYANA HYDROMET SERVICE WRF

Init: 2017-07-07_00:00:00

Valid: 2017-07-07_12:00:00

Precipitation Tendency from 2017-07-07_09:00:00 to 2017-07-07_12:00:00 UTC time -4 for localtime (mm)



OUTPUT FROM WRF V3.7 MODEL

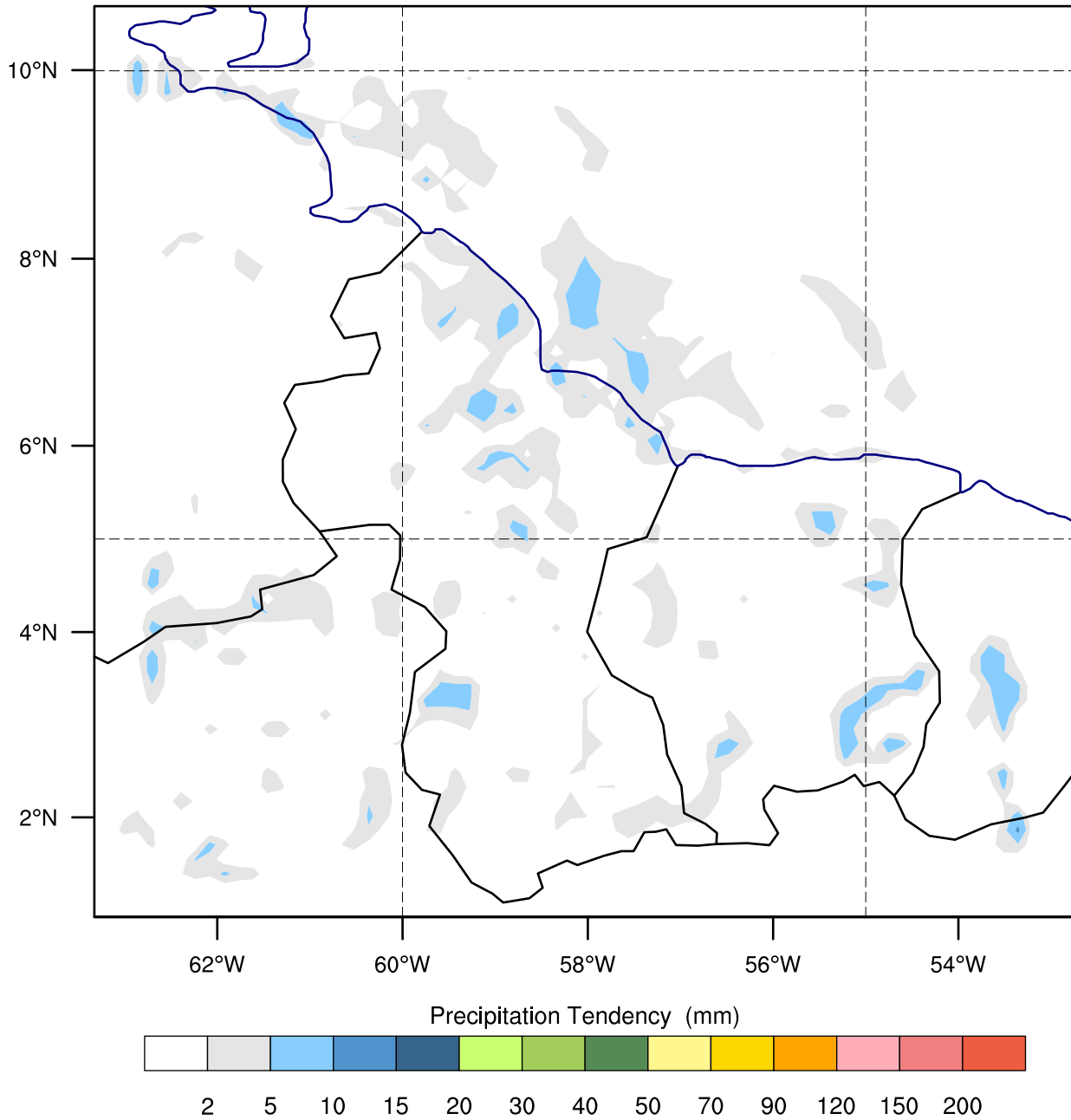
WE = 70 ; SN = 65 ; Levels = 30 ; Dis = 15km ; Phys Opt = 14 ; PBL Opt = 1 ; Cu Opt = 1

GUYANA HYDROMET SERVICE WRF

Init: 2017-07-07_00:00:00

Valid: 2017-07-07_15:00:00

Precipitation Tendency from 2017-07-07_12:00:00 to 2017-07-07_15:00:00 UTC time -4 for localtime (mm)



OUTPUT FROM WRF V3.7 MODEL

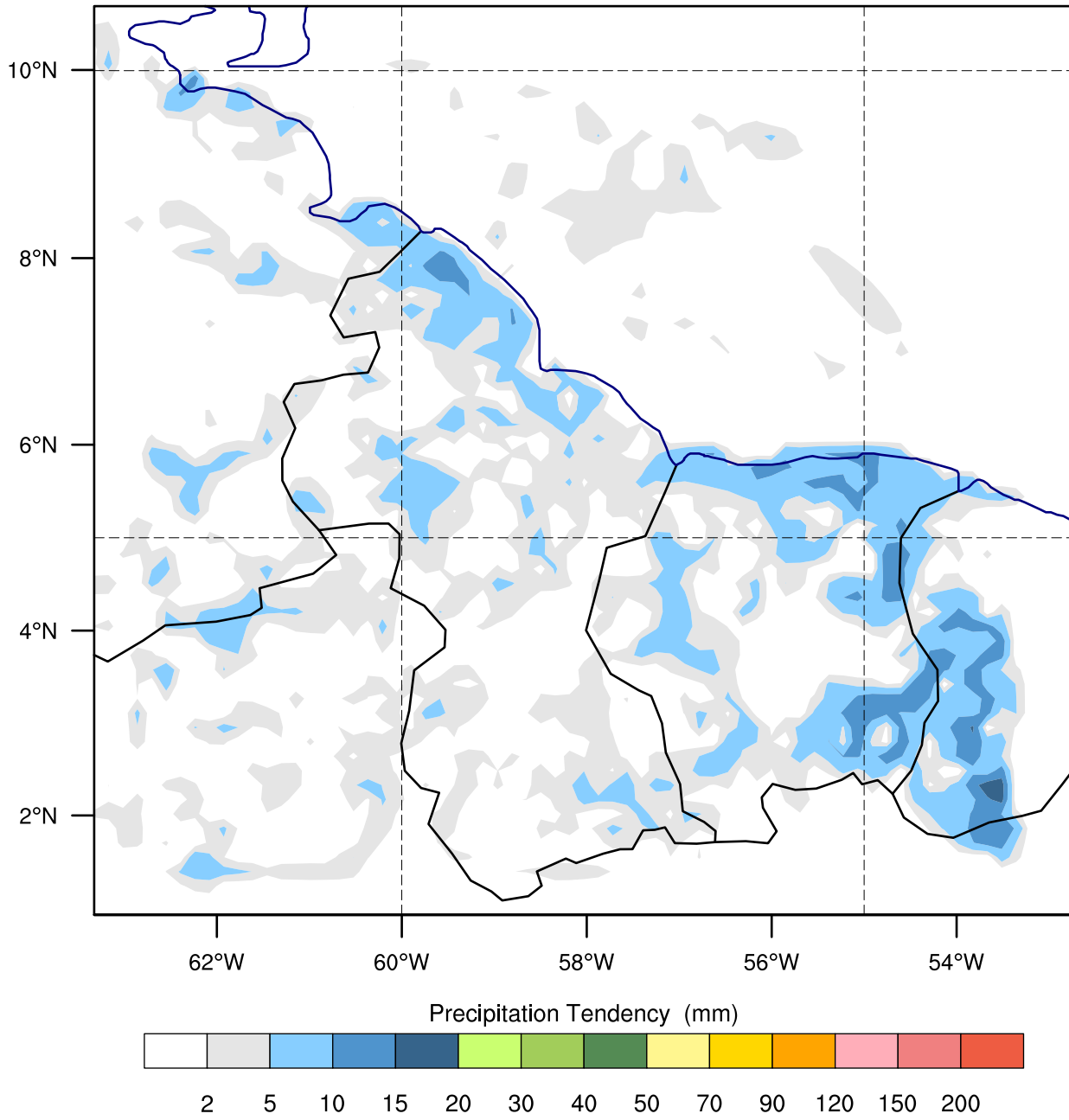
WE = 70 ; SN = 65 ; Levels = 30 ; Dis = 15km ; Phys Opt = 14 ; PBL Opt = 1 ; Cu Opt = 1

GUYANA HYDROMET SERVICE WRF

Init: 2017-07-07_00:00:00

Valid: 2017-07-07_18:00:00

Precipitation Tendency from 2017-07-07_15:00:00 to 2017-07-07_18:00:00 UTC time -4 for localtime (mm)



OUTPUT FROM WRF V3.7 MODEL

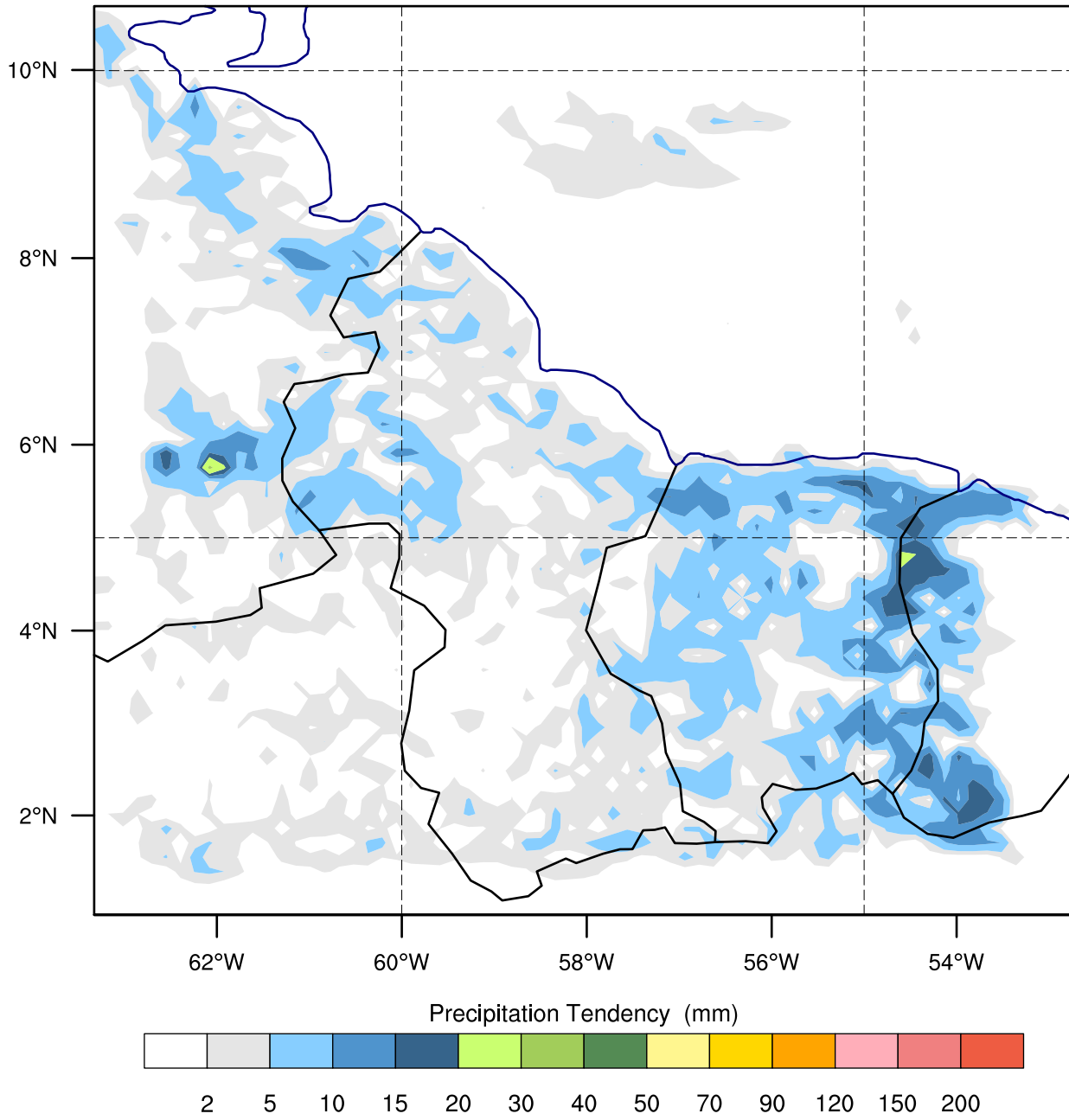
WE = 70 ; SN = 65 ; Levels = 30 ; Dis = 15km ; Phys Opt = 14 ; PBL Opt = 1 ; Cu Opt = 1

GUYANA HYDROMET SERVICE WRF

Init: 2017-07-07_00:00:00

Valid: 2017-07-07_21:00:00

Precipitation Tendency from 2017-07-07_18:00:00 to 2017-07-07_21:00:00 UTC time -4 for localtime (mm)



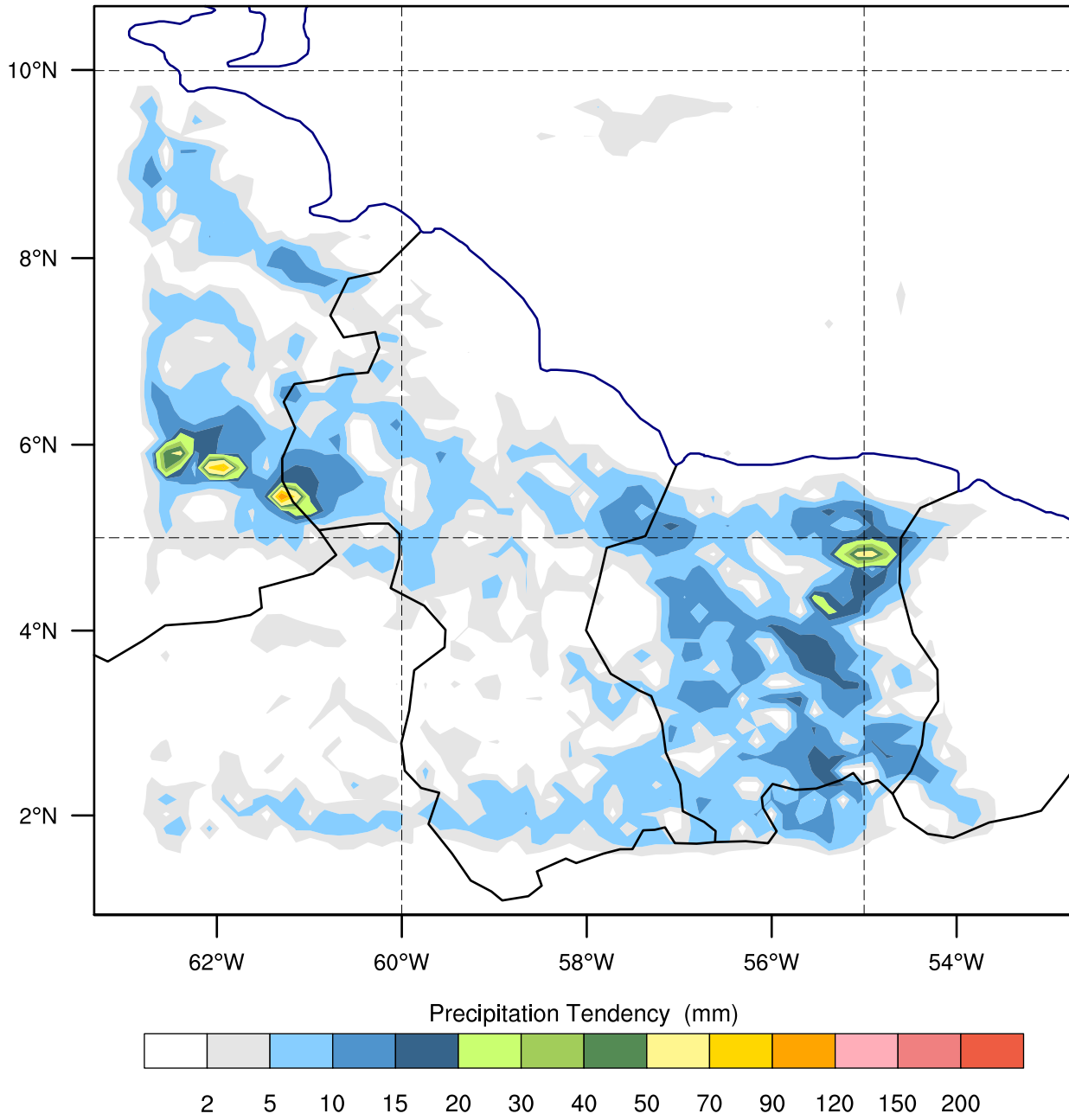
OUTPUT FROM WRF V3.7 MODEL

WE = 70 ; SN = 65 ; Levels = 30 ; Dis = 15km ; Phys Opt = 14 ; PBL Opt = 1 ; Cu Opt = 1

GUYANA HYDROMET SERVICE WRF

Init: 2017-07-07_00:00:00
Valid: 2017-07-08_00:00:00

Precipitation Tendency from 2017-07-07_21:00:00 to 2017-07-08_00:00:00 UTC time -4 for localtime (mm)



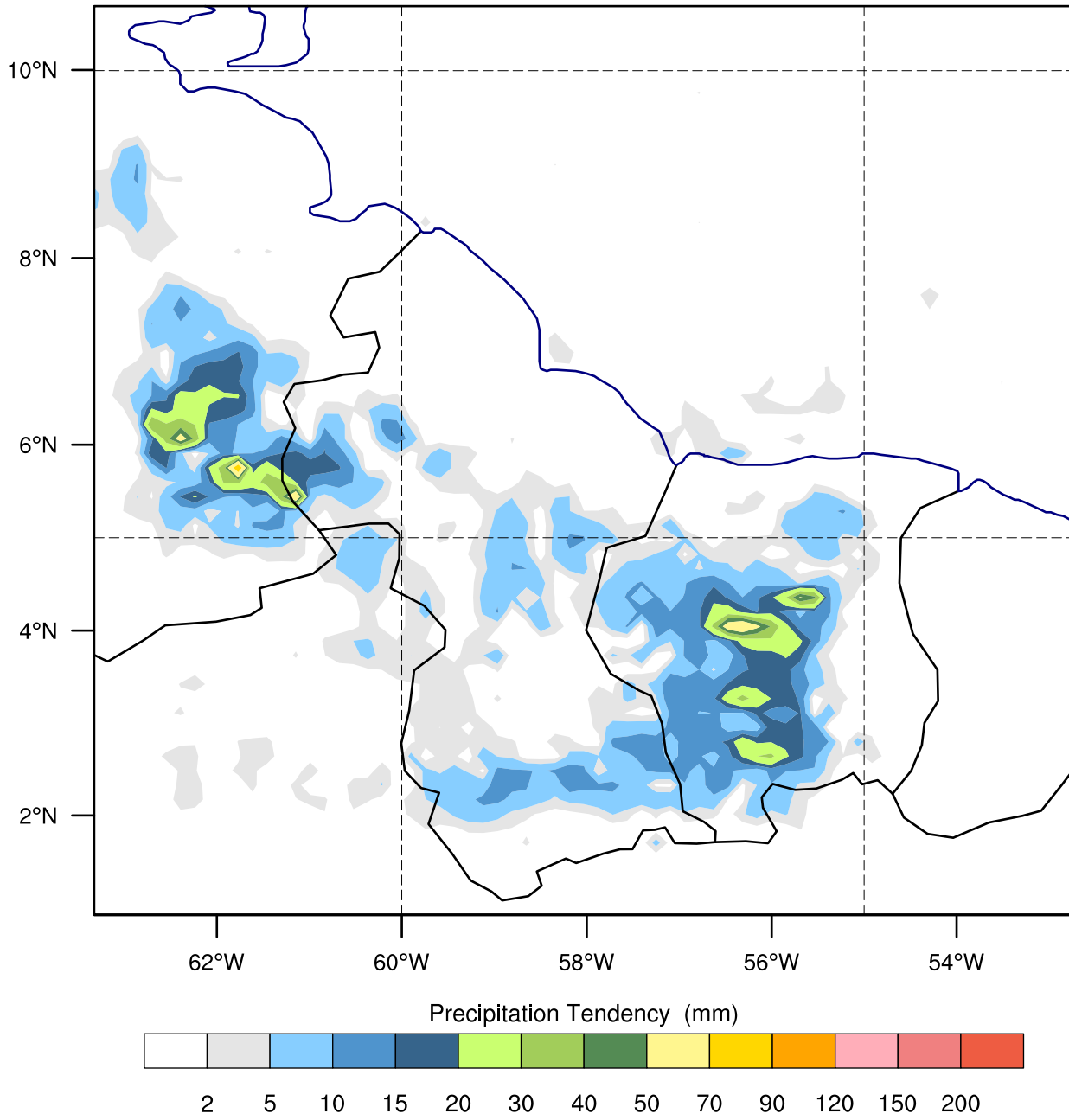
OUTPUT FROM WRF V3.7 MODEL
WE = 70 ; SN = 65 ; Levels = 30 ; Dis = 15km ; Phys Opt = 14 ; PBL Opt = 1 ; Cu Opt = 1

GUYANA HYDROMET SERVICE WRF

Init: 2017-07-07_00:00:00

Valid: 2017-07-08_03:00:00

Precipitation Tendency from 2017-07-08_00:00:00 to 2017-07-08_03:00:00 UTC time -4 for localtime (mm)



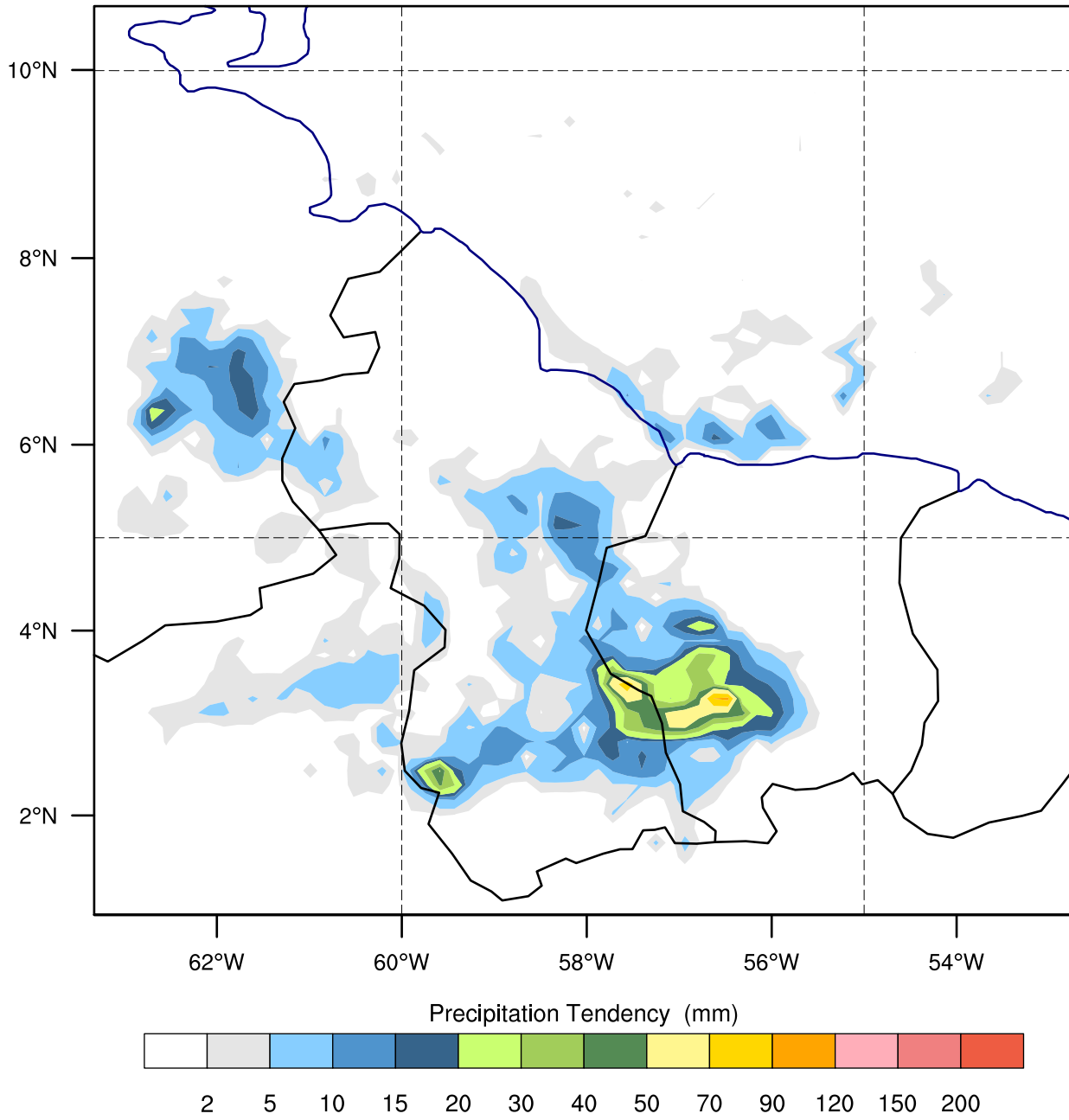
OUTPUT FROM WRF V3.7 MODEL

WE = 70 ; SN = 65 ; Levels = 30 ; Dis = 15km ; Phys Opt = 14 ; PBL Opt = 1 ; Cu Opt = 1

GUYANA HYDROMET SERVICE WRF

Init: 2017-07-07_00:00:00
Valid: 2017-07-08_06:00:00

Precipitation Tendency from 2017-07-08_03:00:00 to 2017-07-08_06:00:00 UTC time -4 for localtime (mm)



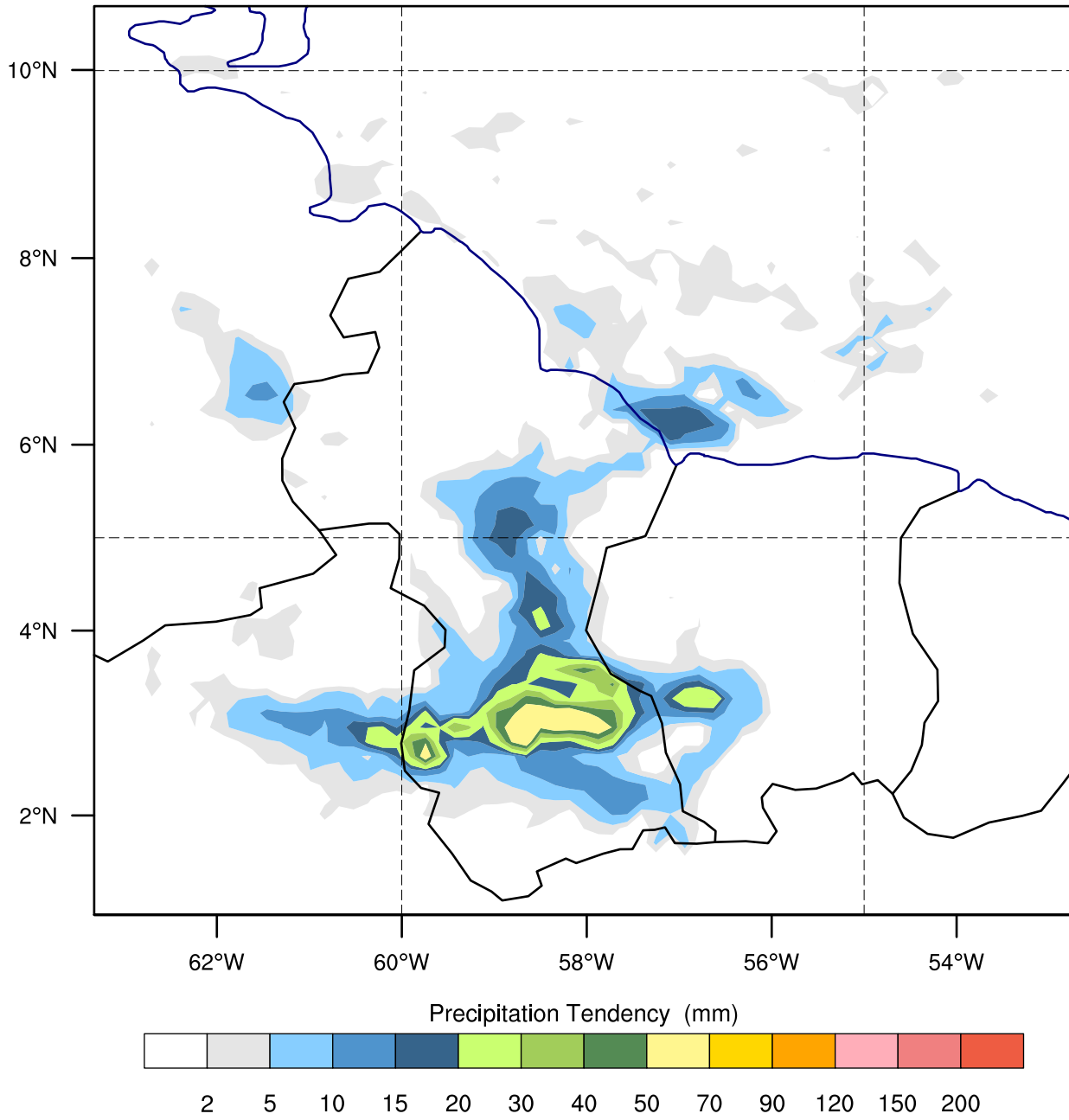
OUTPUT FROM WRF V3.7 MODEL
WE = 70 ; SN = 65 ; Levels = 30 ; Dis = 15km ; Phys Opt = 14 ; PBL Opt = 1 ; Cu Opt = 1

GUYANA HYDROMET SERVICE WRF

Init: 2017-07-07_00:00:00

Valid: 2017-07-08_09:00:00

Precipitation Tendency from 2017-07-08_06:00:00 to 2017-07-08_09:00:00 UTC time -4 for localtime (mm)



OUTPUT FROM WRF V3.7 MODEL

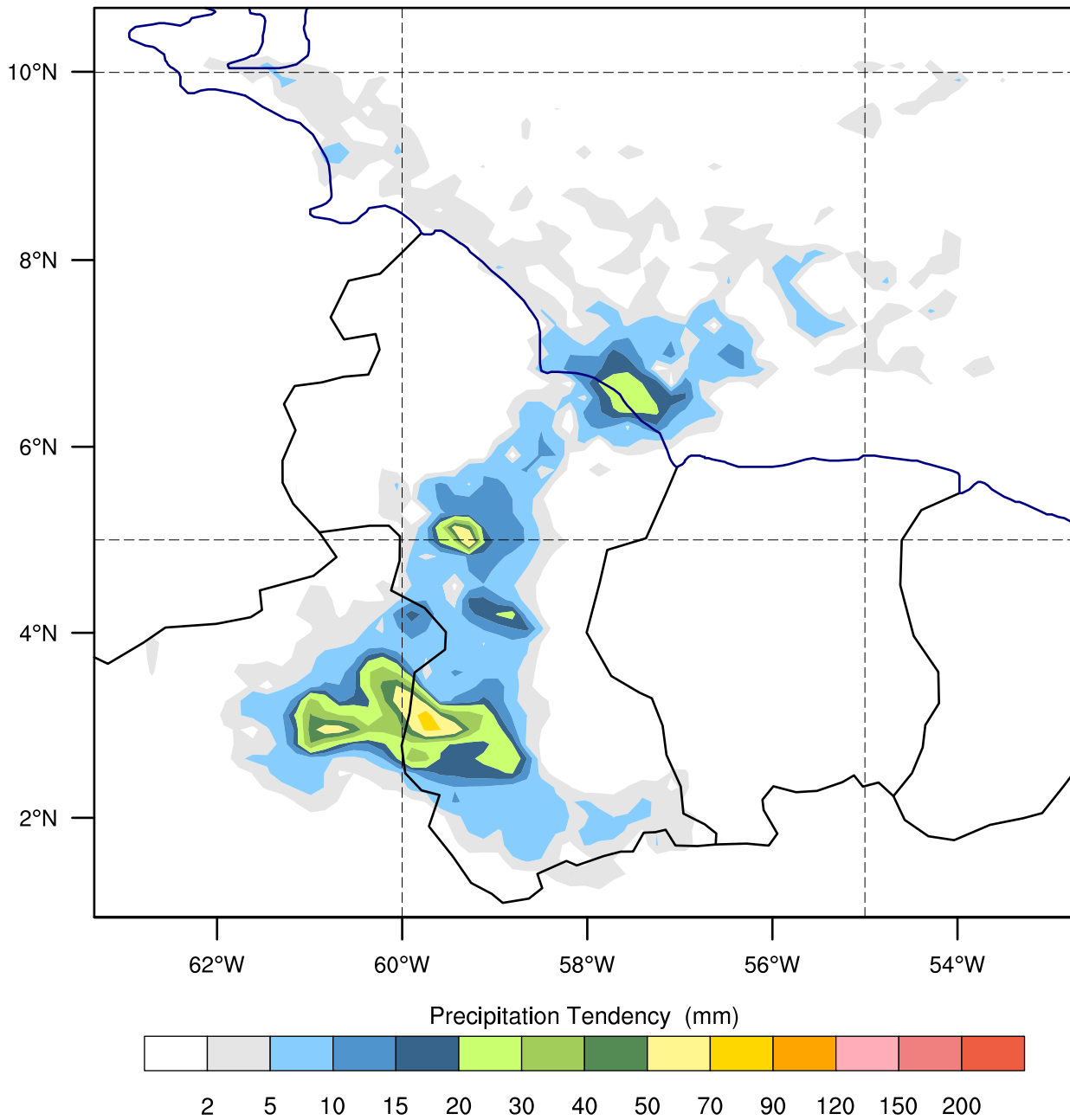
WE = 70 ; SN = 65 ; Levels = 30 ; Dis = 15km ; Phys Opt = 14 ; PBL Opt = 1 ; Cu Opt = 1

GUYANA HYDROMET SERVICE WRF

Init: 2017-07-07_00:00:00

Valid: 2017-07-08_12:00:00

Precipitation Tendency from 2017-07-08_09:00:00 to 2017-07-08_12:00:00 UTC time -4 for localtime (mm)



OUTPUT FROM WRF V3.7 MODEL

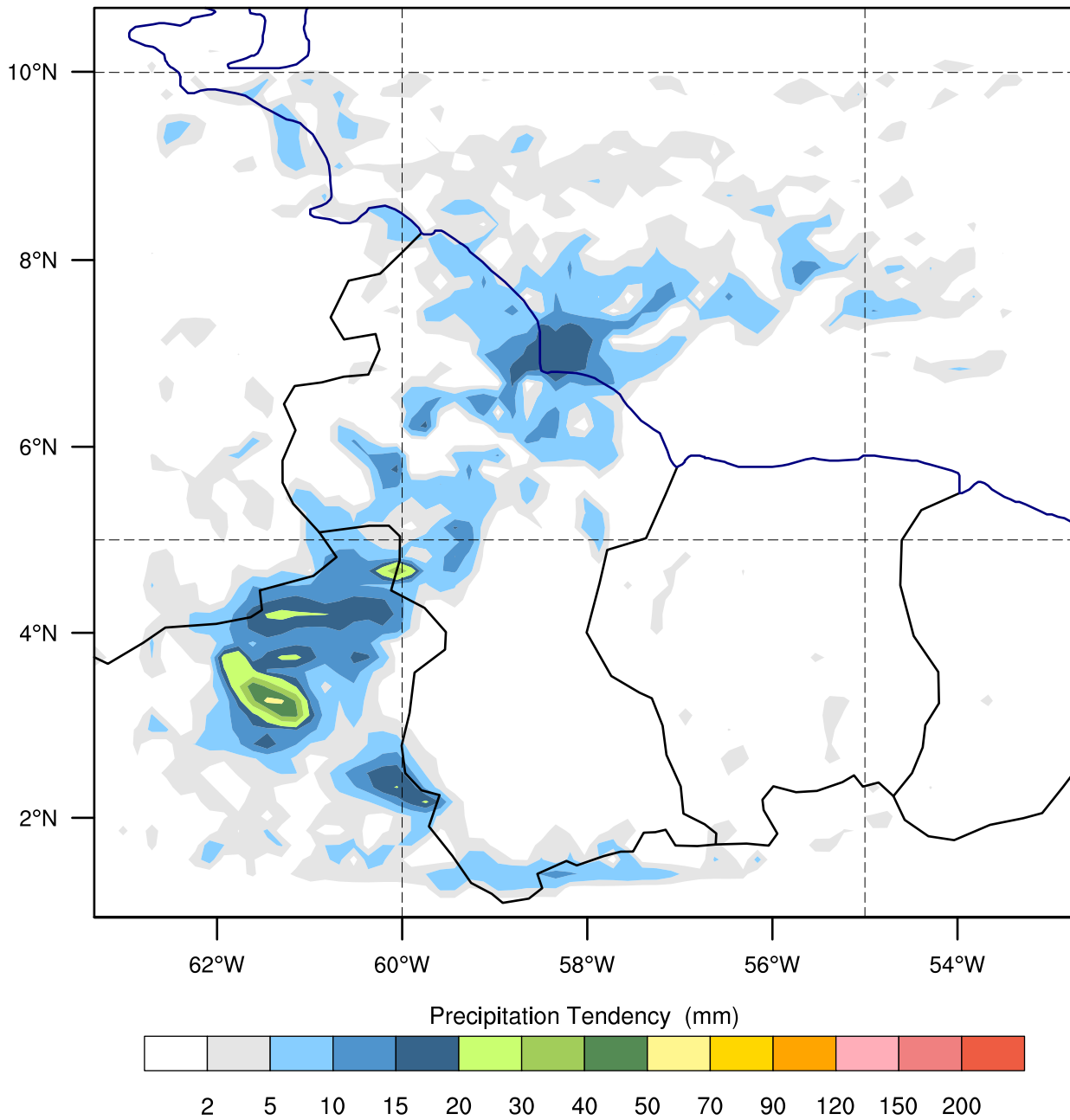
WE = 70 ; SN = 65 ; Levels = 30 ; Dis = 15km ; Phys Opt = 14 ; PBL Opt = 1 ; Cu Opt = 1

GUYANA HYDROMET SERVICE WRF

Init: 2017-07-07_00:00:00

Valid: 2017-07-08_15:00:00

Precipitation Tendency from 2017-07-08_12:00:00 to 2017-07-08_15:00:00 UTC time -4 for localtime (mm)



OUTPUT FROM WRF V3.7 MODEL

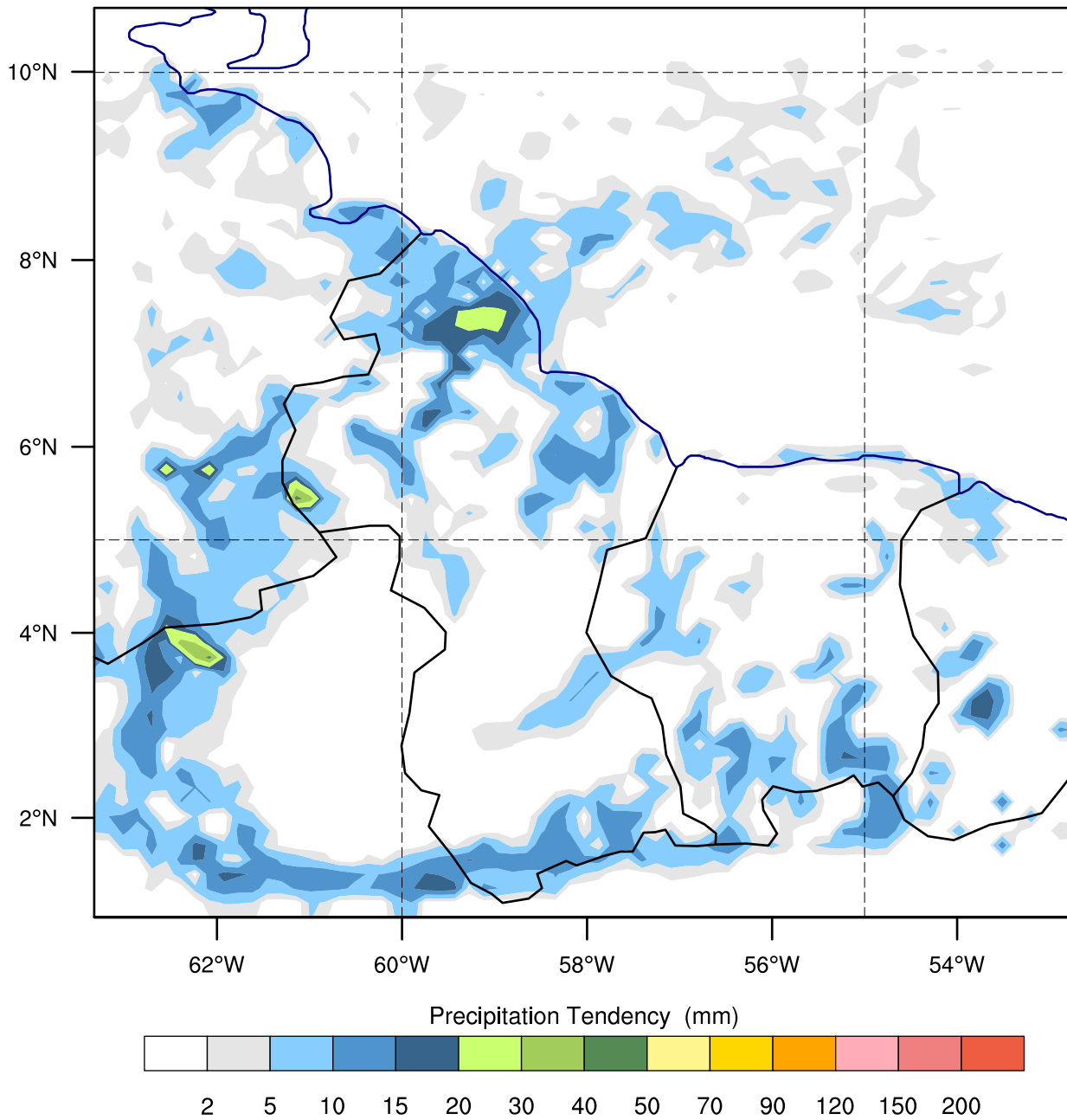
WE = 70 ; SN = 65 ; Levels = 30 ; Dis = 15km ; Phys Opt = 14 ; PBL Opt = 1 ; Cu Opt = 1

GUYANA HYDROMET SERVICE WRF

Init: 2017-07-07_00:00:00

Valid: 2017-07-08_18:00:00

Precipitation Tendency from 2017-07-08_15:00:00 to 2017-07-08_18:00:00 UTC time -4 for localtime (mm)



OUTPUT FROM WRF V3.7 MODEL

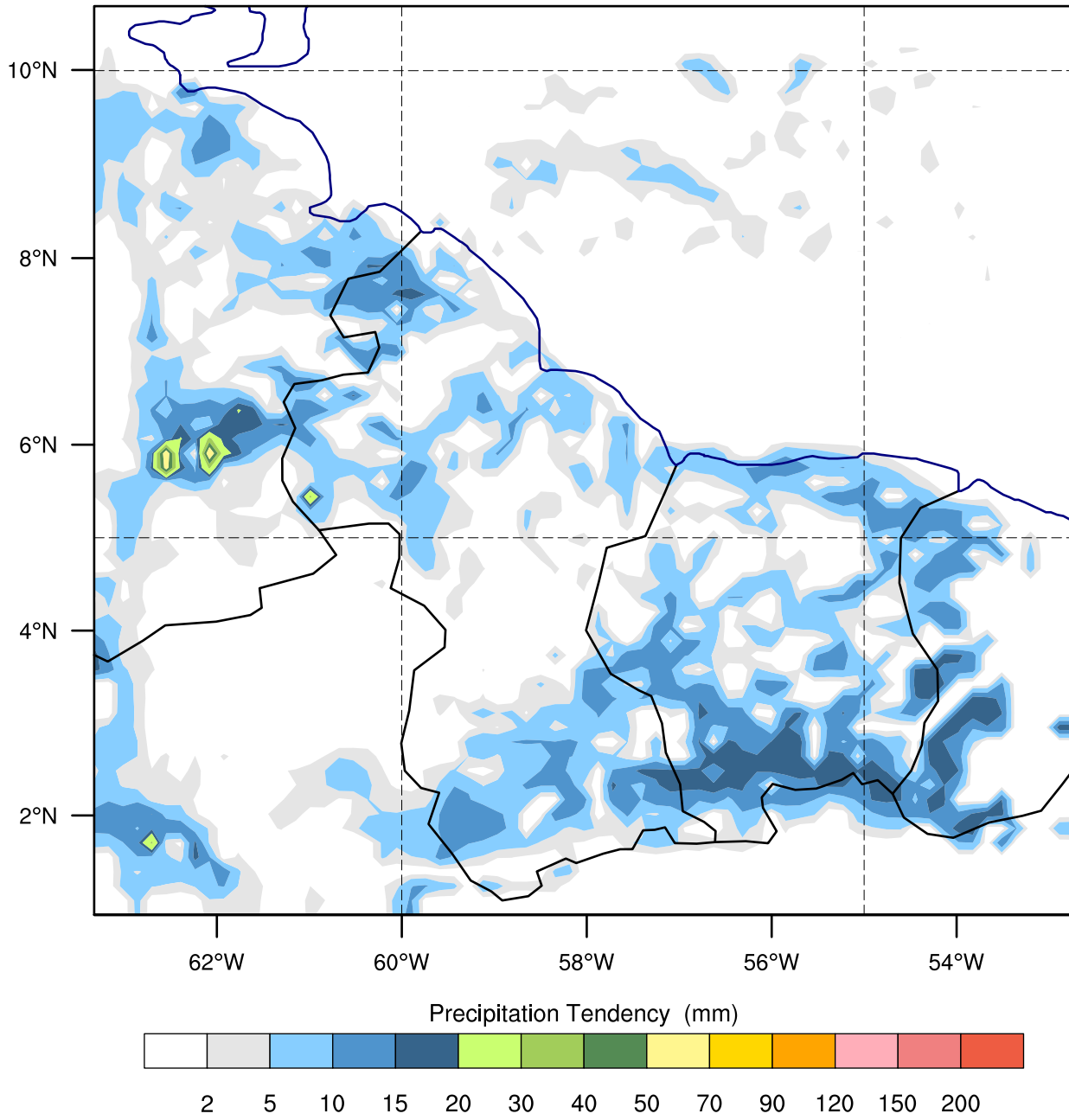
WE = 70 ; SN = 65 ; Levels = 30 ; Dis = 15km ; Phys Opt = 14 ; PBL Opt = 1 ; Cu Opt = 1

GUYANA HYDROMET SERVICE WRF

Init: 2017-07-07_00:00:00

Valid: 2017-07-08_21:00:00

Precipitation Tendency from 2017-07-08_18:00:00 to 2017-07-08_21:00:00 UTC time -4 for localtime (mm)



OUTPUT FROM WRF V3.7 MODEL

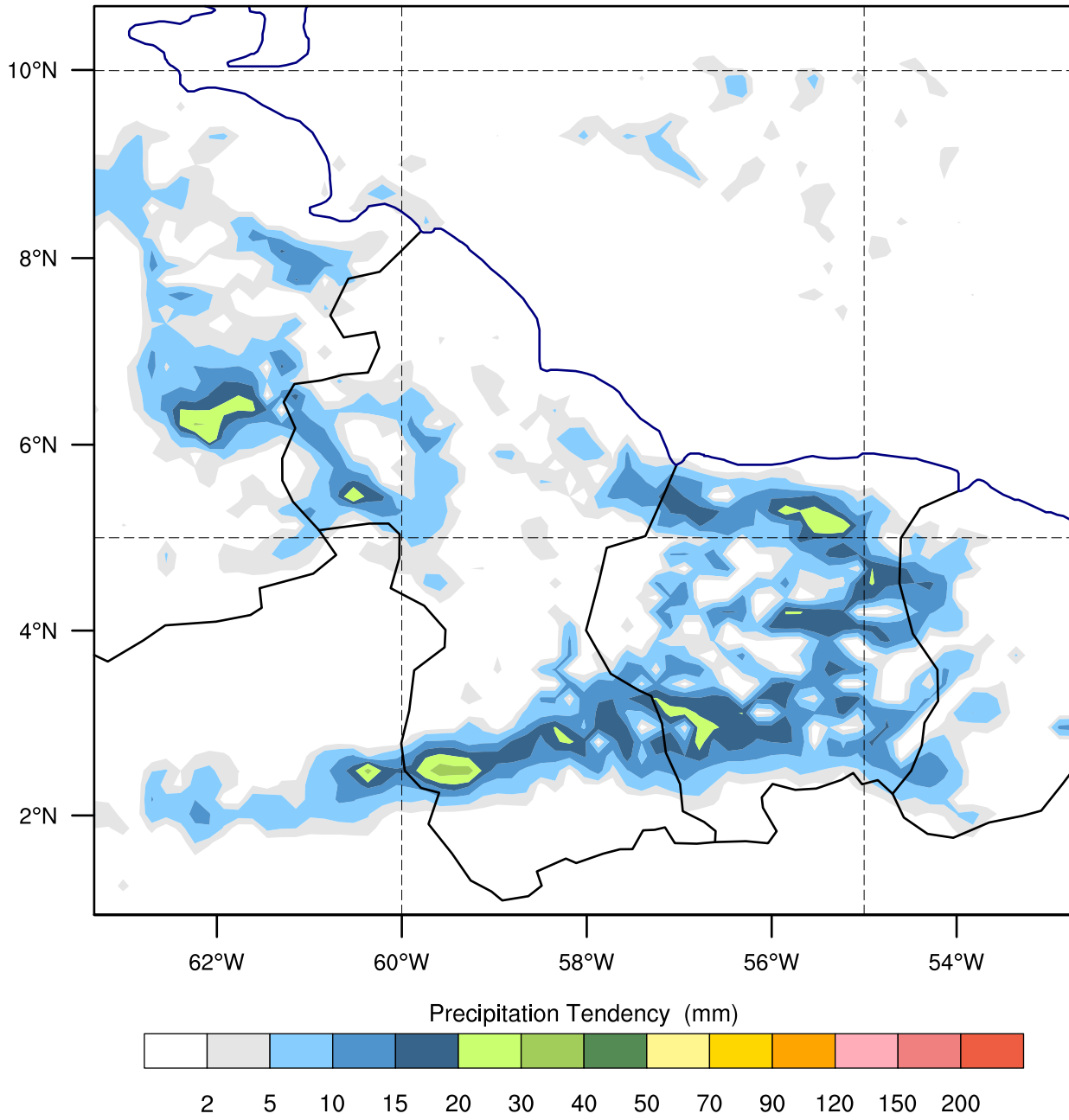
WE = 70 ; SN = 65 ; Levels = 30 ; Dis = 15km ; Phys Opt = 14 ; PBL Opt = 1 ; Cu Opt = 1

GUYANA HYDROMET SERVICE WRF

Init: 2017-07-07_00:00:00

Valid: 2017-07-09_00:00:00

Precipitation Tendency from 2017-07-08_21:00:00 to 2017-07-09_00:00:00 UTC time -4 for localtime (mm)



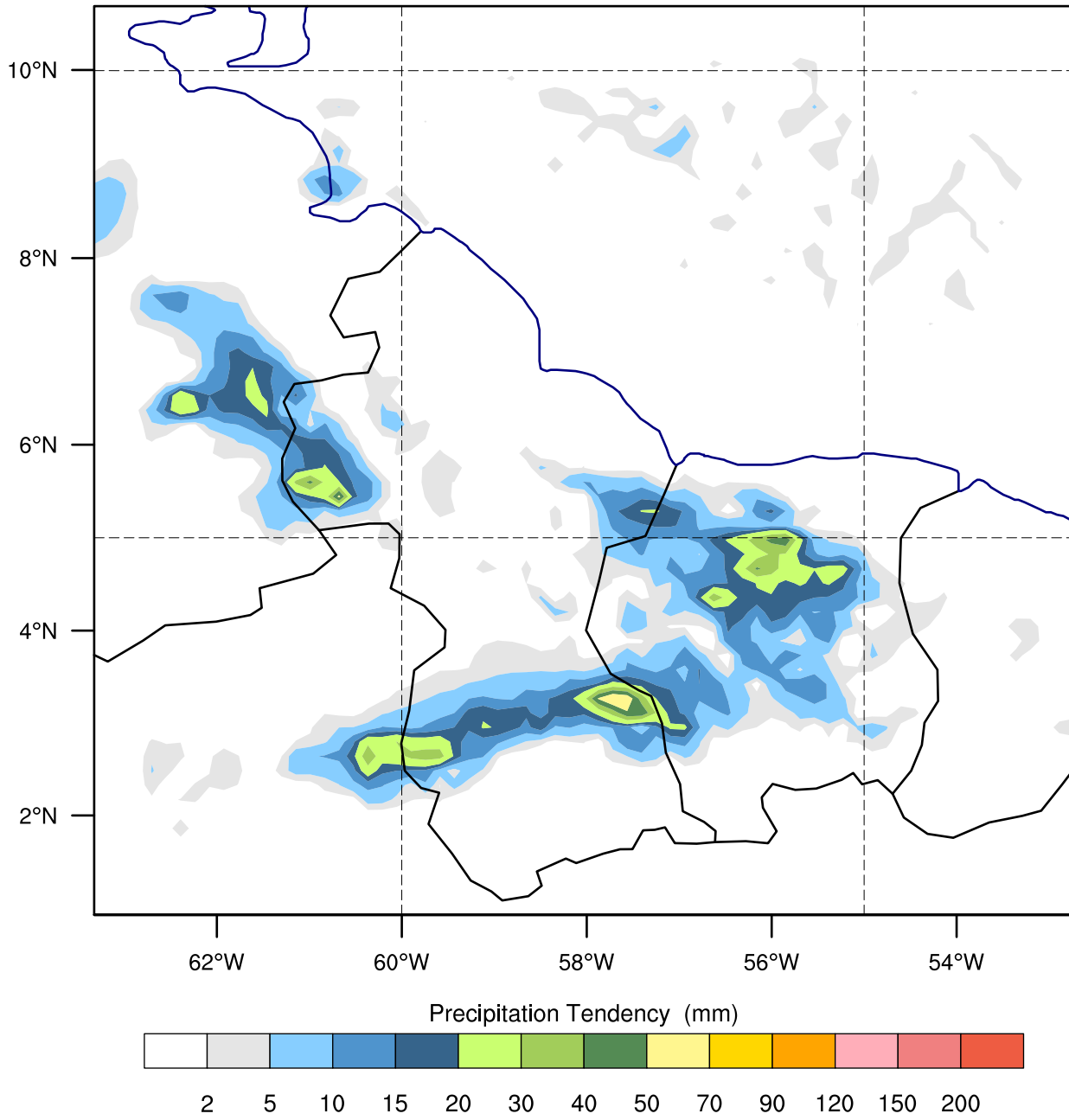
OUTPUT FROM WRF V3.7 MODEL

WE = 70 ; SN = 65 ; Levels = 30 ; Dis = 15km ; Phys Opt = 14 ; PBL Opt = 1 ; Cu Opt = 1

GUYANA HYDROMET SERVICE WRF

Init: 2017-07-07_00:00:00
Valid: 2017-07-09_03:00:00

Precipitation Tendency from 2017-07-09_00:00:00 to 2017-07-09_03:00:00 UTC time -4 for localtime (mm)



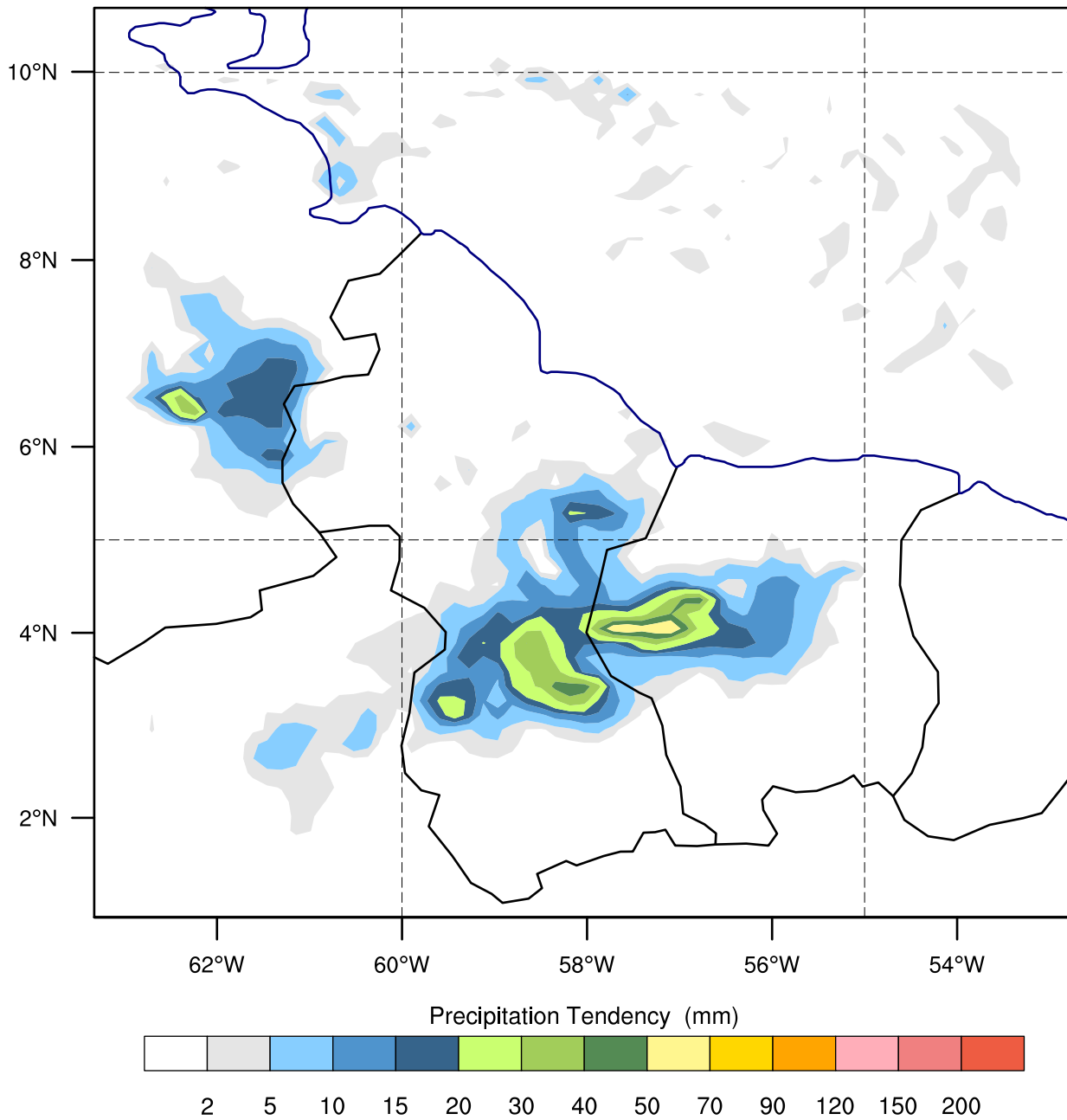
OUTPUT FROM WRF V3.7 MODEL
WE = 70 ; SN = 65 ; Levels = 30 ; Dis = 15km ; Phys Opt = 14 ; PBL Opt = 1 ; Cu Opt = 1

GUYANA HYDROMET SERVICE WRF

Init: 2017-07-07_00:00:00

Valid: 2017-07-09_06:00:00

Precipitation Tendency from 2017-07-09_03:00:00 to 2017-07-09_06:00:00 UTC time -4 for localtime (mm)



OUTPUT FROM WRF V3.7 MODEL

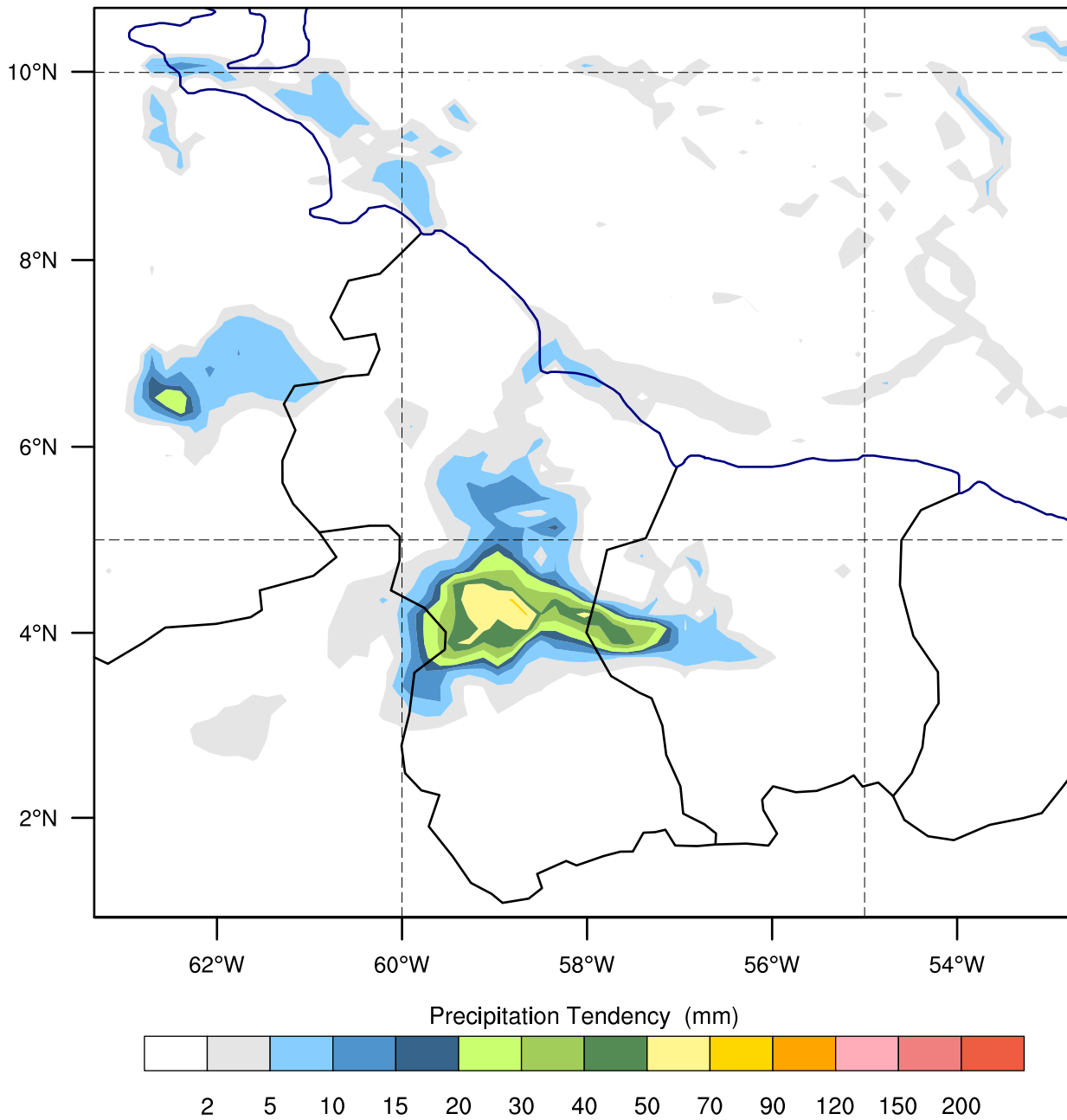
WE = 70 ; SN = 65 ; Levels = 30 ; Dis = 15km ; Phys Opt = 14 ; PBL Opt = 1 ; Cu Opt = 1

GUYANA HYDROMET SERVICE WRF

Init: 2017-07-07_00:00:00

Valid: 2017-07-09_09:00:00

Precipitation Tendency from 2017-07-09_06:00:00 to 2017-07-09_09:00:00 UTC time -4 for localtime (mm)



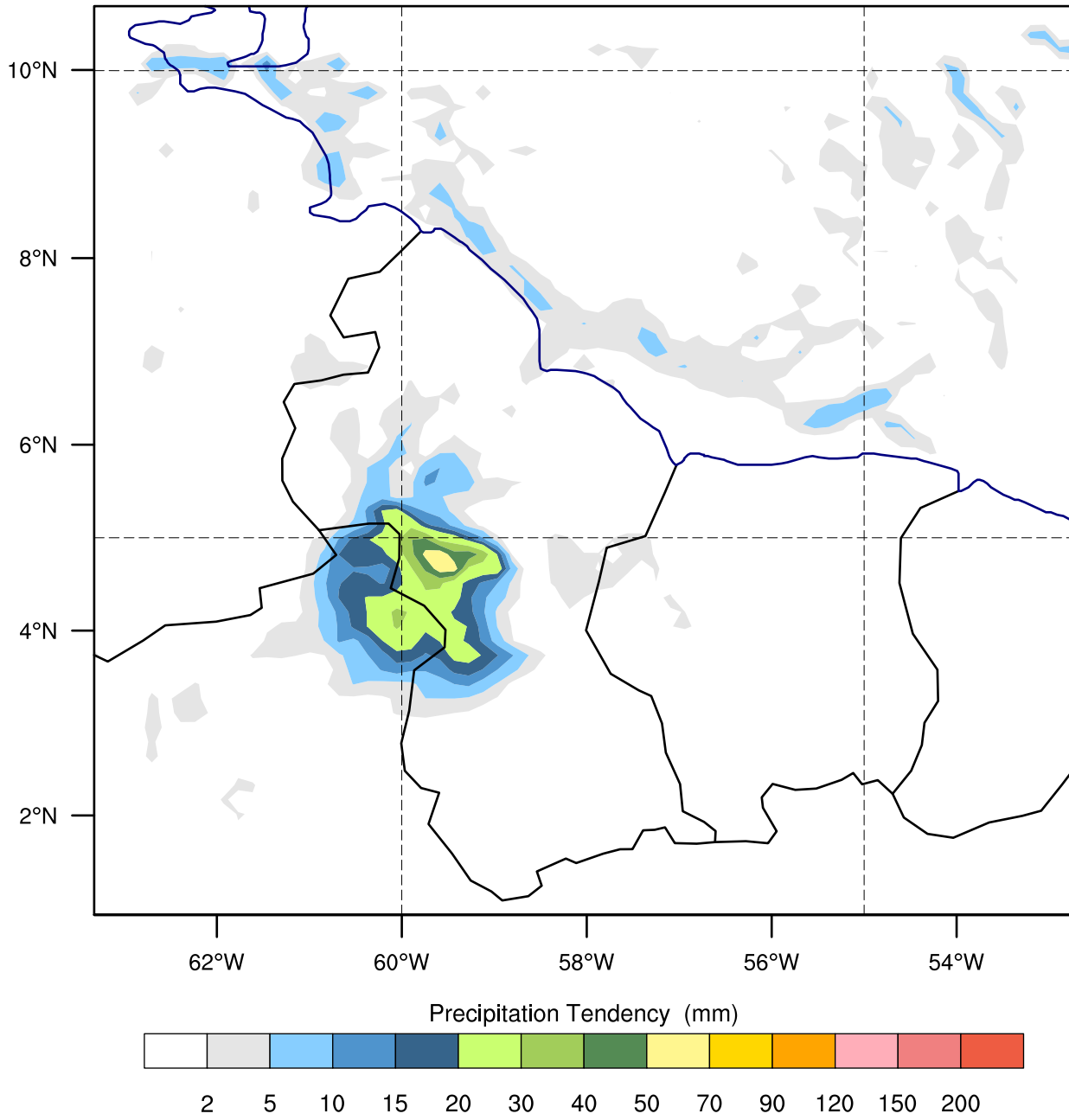
OUTPUT FROM WRF V3.7 MODEL

WE = 70 ; SN = 65 ; Levels = 30 ; Dis = 15km ; Phys Opt = 14 ; PBL Opt = 1 ; Cu Opt = 1

GUYANA HYDROMET SERVICE WRF

Init: 2017-07-07_00:00:00
Valid: 2017-07-09_12:00:00

Precipitation Tendency from 2017-07-09_09:00:00 to 2017-07-09_12:00:00 UTC time -4 for localtime (mm)

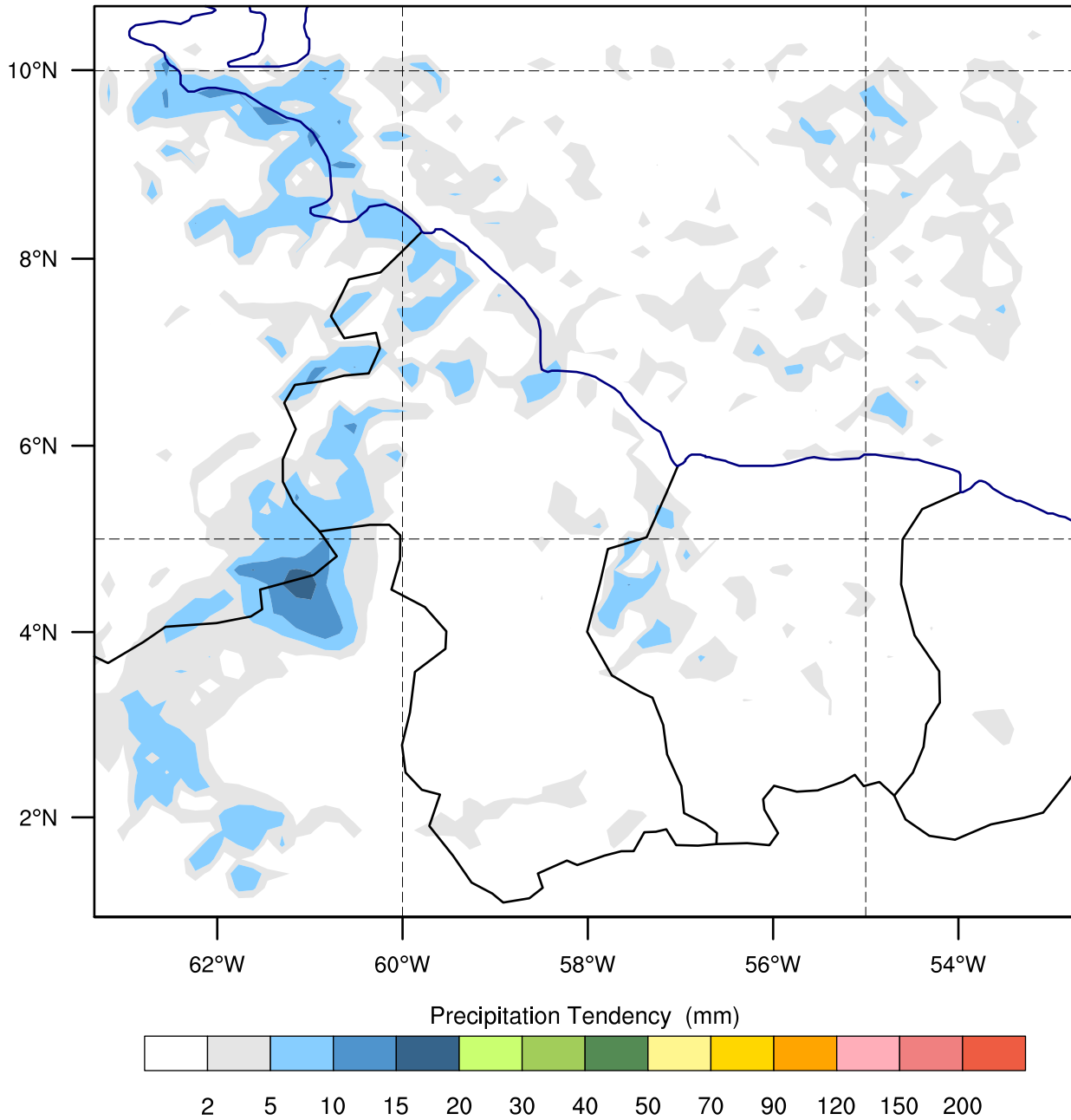


OUTPUT FROM WRF V3.7 MODEL
WE = 70 ; SN = 65 ; Levels = 30 ; Dis = 15km ; Phys Opt = 14 ; PBL Opt = 1 ; Cu Opt = 1

GUYANA HYDROMET SERVICE WRF

Init: 2017-07-07_00:00:00
Valid: 2017-07-09_15:00:00

Precipitation Tendency from 2017-07-09_12:00:00 to 2017-07-09_15:00:00 UTC time -4 for localtime (mm)

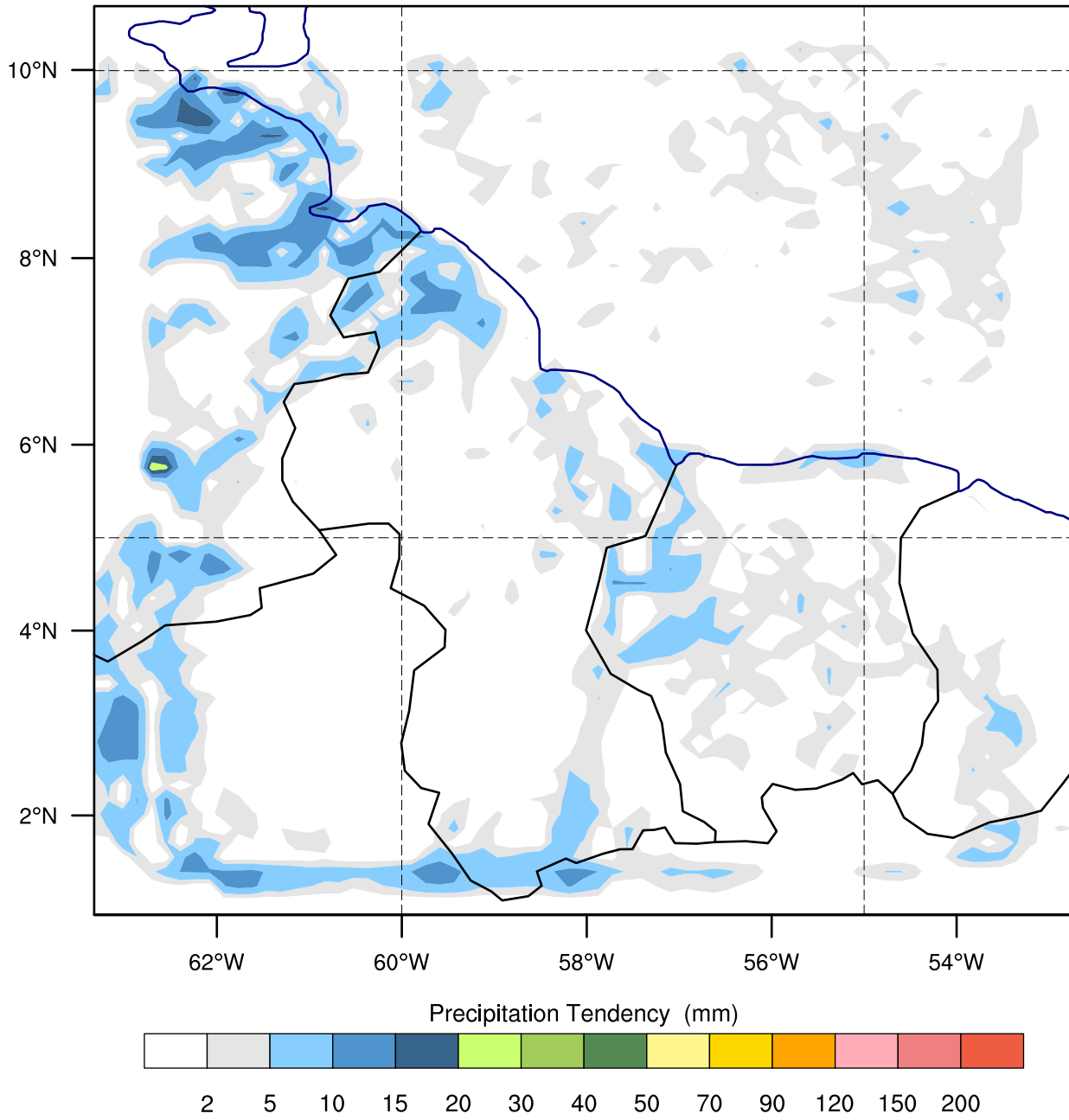


OUTPUT FROM WRF V3.7 MODEL
WE = 70 ; SN = 65 ; Levels = 30 ; Dis = 15km ; Phys Opt = 14 ; PBL Opt = 1 ; Cu Opt = 1

GUYANA HYDROMET SERVICE WRF

Init: 2017-07-07_00:00:00
Valid: 2017-07-09_18:00:00

Precipitation Tendency from 2017-07-09_15:00:00 to 2017-07-09_18:00:00 UTC time -4 for localtime (mm)



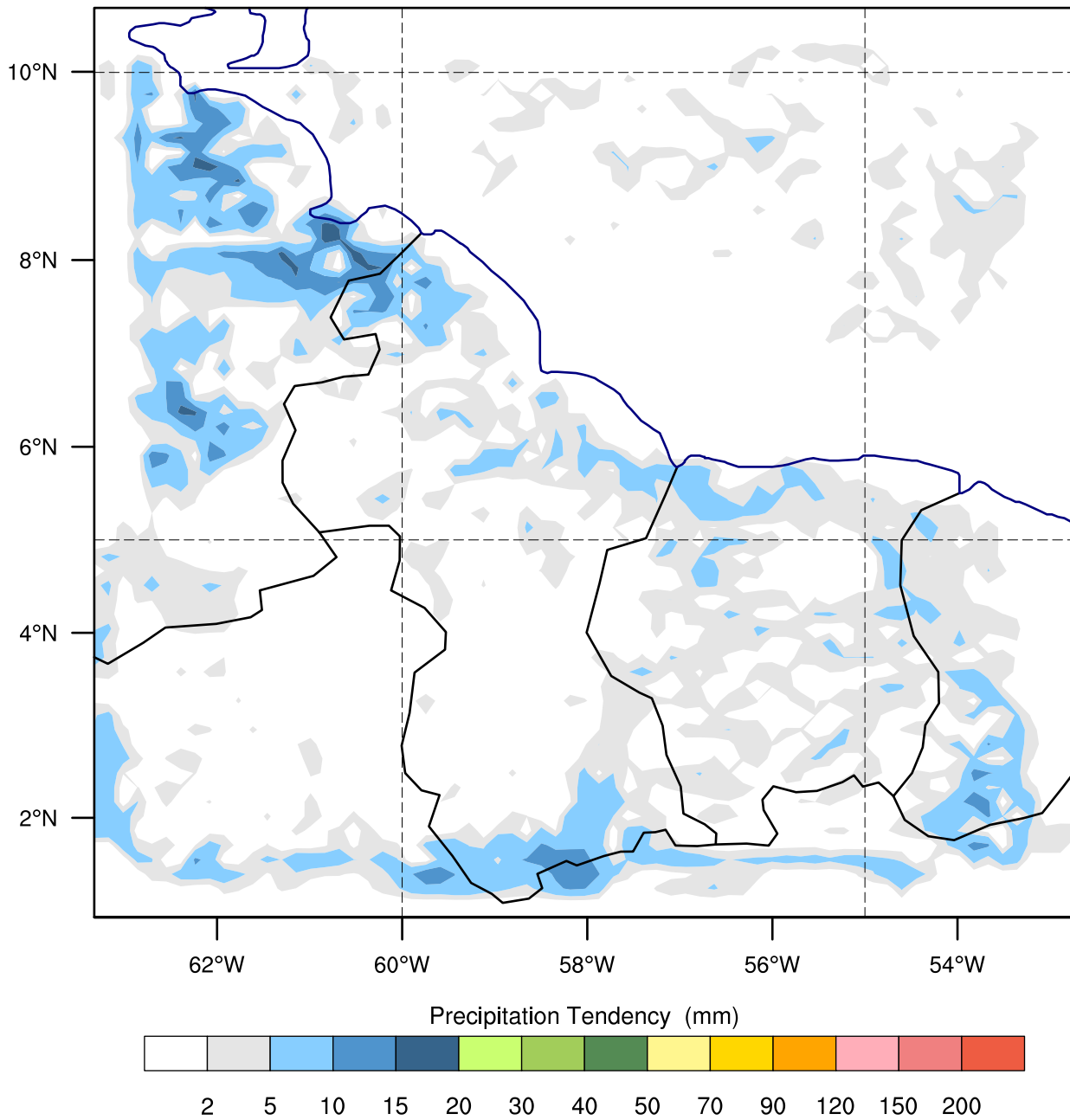
OUTPUT FROM WRF V3.7 MODEL
WE = 70 ; SN = 65 ; Levels = 30 ; Dis = 15km ; Phys Opt = 14 ; PBL Opt = 1 ; Cu Opt = 1

GUYANA HYDROMET SERVICE WRF

Init: 2017-07-07_00:00:00

Valid: 2017-07-09_21:00:00

Precipitation Tendency from 2017-07-09_18:00:00 to 2017-07-09_21:00:00 UTC time -4 for localtime (mm)



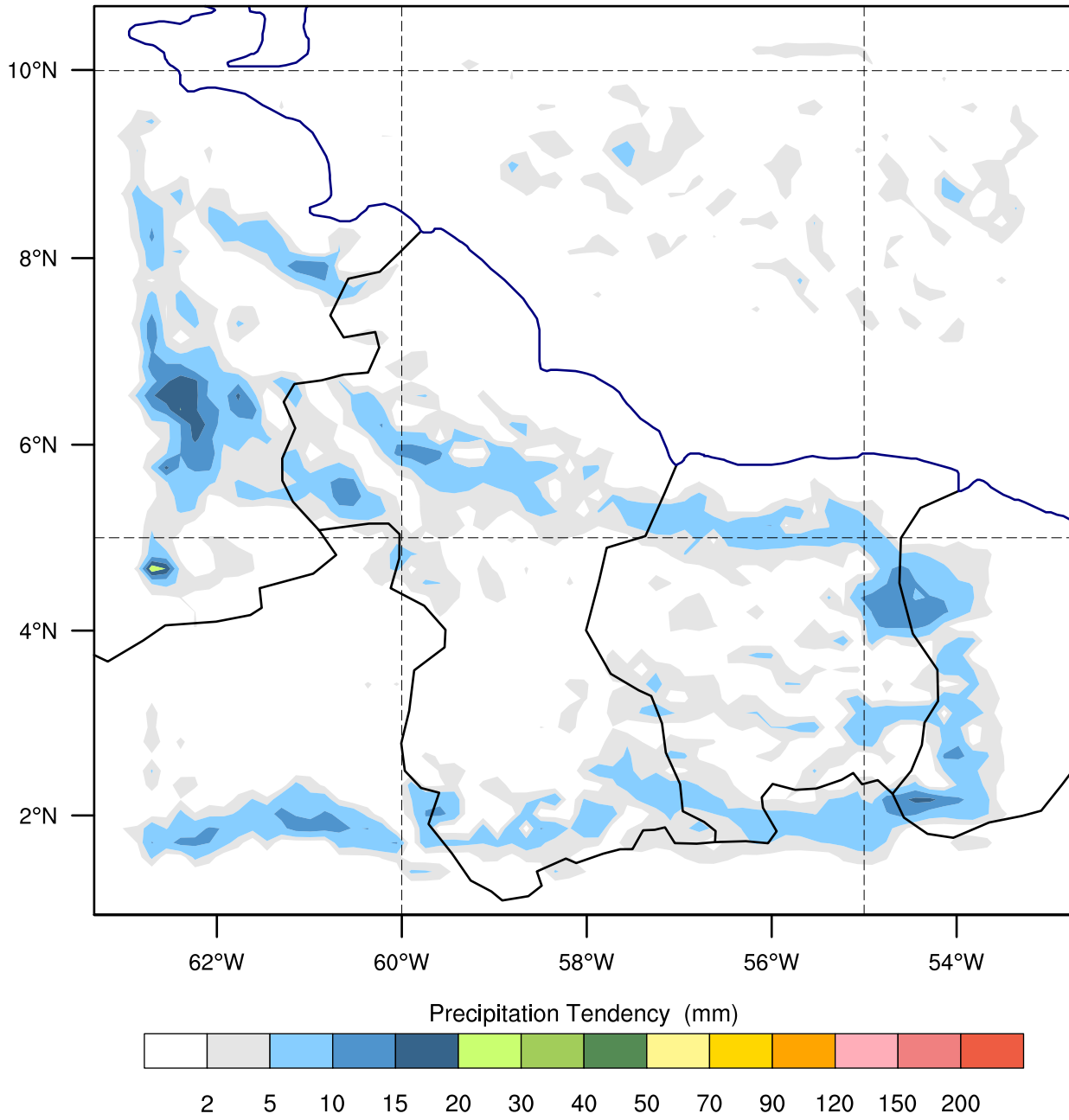
OUTPUT FROM WRF V3.7 MODEL

WE = 70 ; SN = 65 ; Levels = 30 ; Dis = 15km ; Phys Opt = 14 ; PBL Opt = 1 ; Cu Opt = 1

GUYANA HYDROMET SERVICE WRF

Init: 2017-07-07_00:00:00
Valid: 2017-07-10_00:00:00

Precipitation Tendency from 2017-07-09_21:00:00 to 2017-07-10_00:00:00 UTC time -4 for localtime (mm)

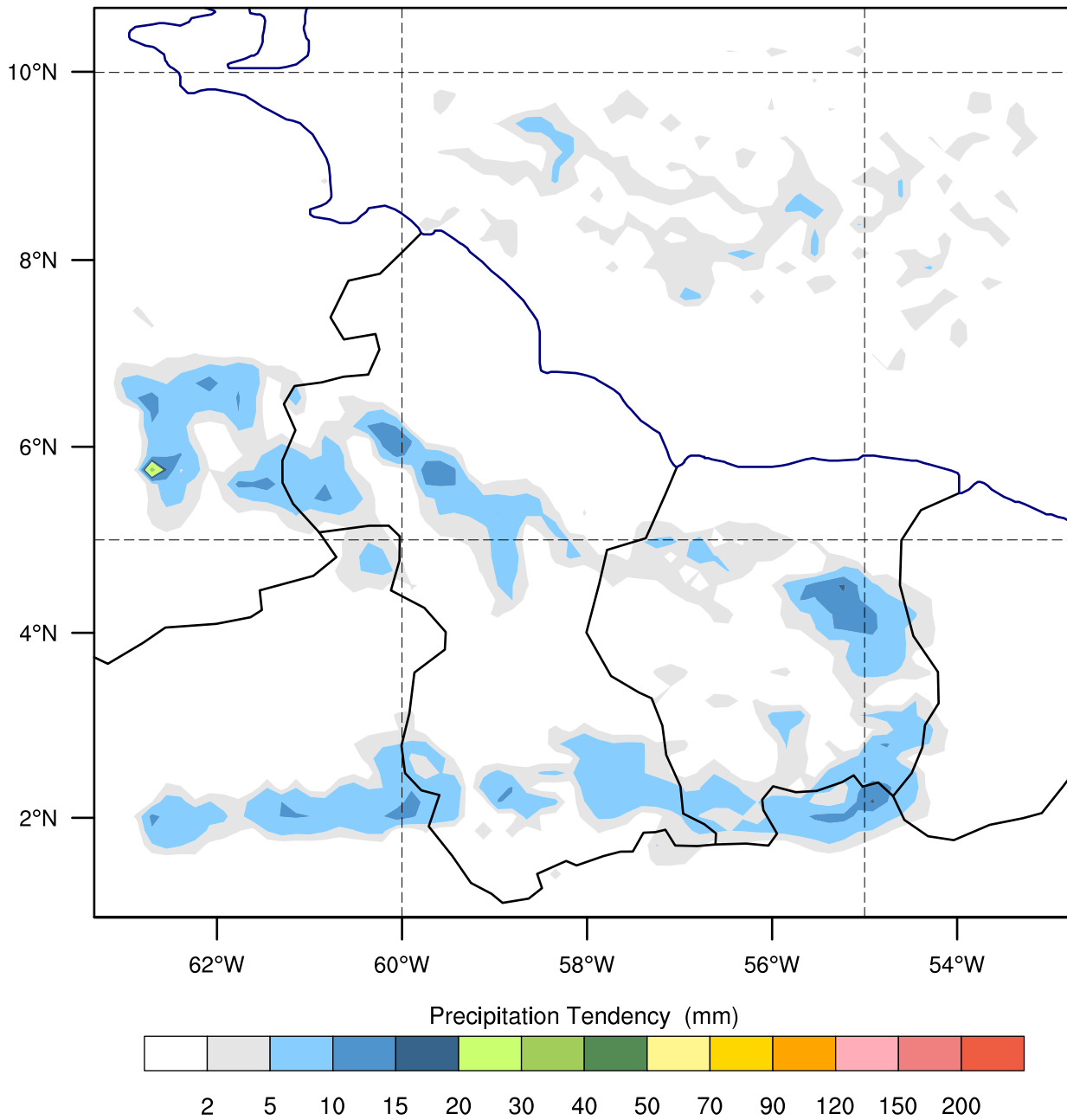


OUTPUT FROM WRF V3.7 MODEL
WE = 70 ; SN = 65 ; Levels = 30 ; Dis = 15km ; Phys Opt = 14 ; PBL Opt = 1 ; Cu Opt = 1

GUYANA HYDROMET SERVICE WRF

Init: 2017-07-07_00:00:00
Valid: 2017-07-10_03:00:00

Precipitation Tendency from 2017-07-10_00:00:00 to 2017-07-10_03:00:00 UTC time -4 for localtime (mm)

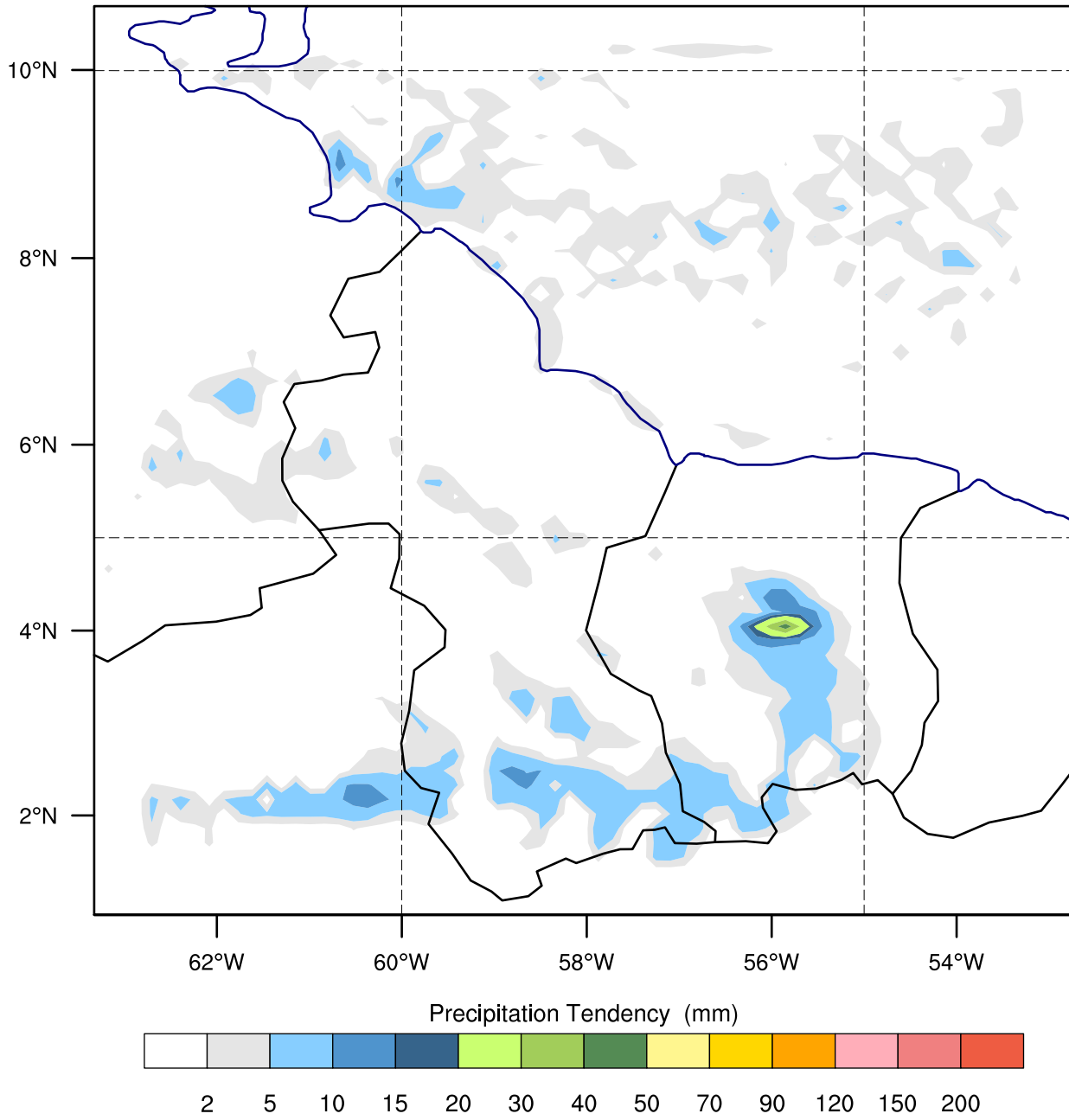


OUTPUT FROM WRF V3.7 MODEL
WE = 70 ; SN = 65 ; Levels = 30 ; Dis = 15km ; Phys Opt = 14 ; PBL Opt = 1 ; Cu Opt = 1

GUYANA HYDROMET SERVICE WRF

Init: 2017-07-07_00:00:00
Valid: 2017-07-10_06:00:00

Precipitation Tendency from 2017-07-10_03:00:00 to 2017-07-10_06:00:00 UTC time -4 for localtime (mm)



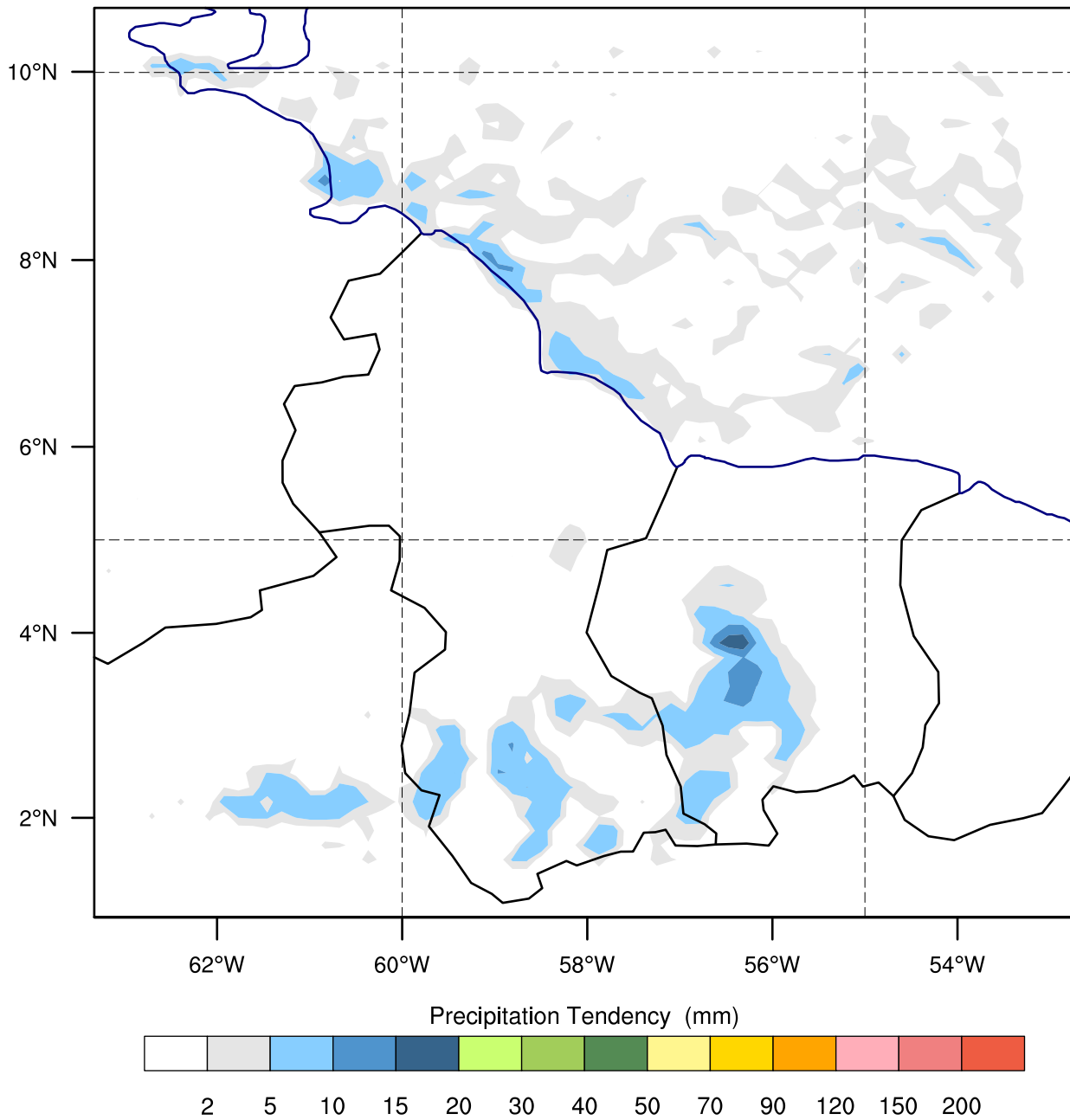
OUTPUT FROM WRF V3.7 MODEL
WE = 70 ; SN = 65 ; Levels = 30 ; Dis = 15km ; Phys Opt = 14 ; PBL Opt = 1 ; Cu Opt = 1

GUYANA HYDROMET SERVICE WRF

Init: 2017-07-07_00:00:00

Valid: 2017-07-10_09:00:00

Precipitation Tendency from 2017-07-10_06:00:00 to 2017-07-10_09:00:00 UTC time -4 for localtime (mm)



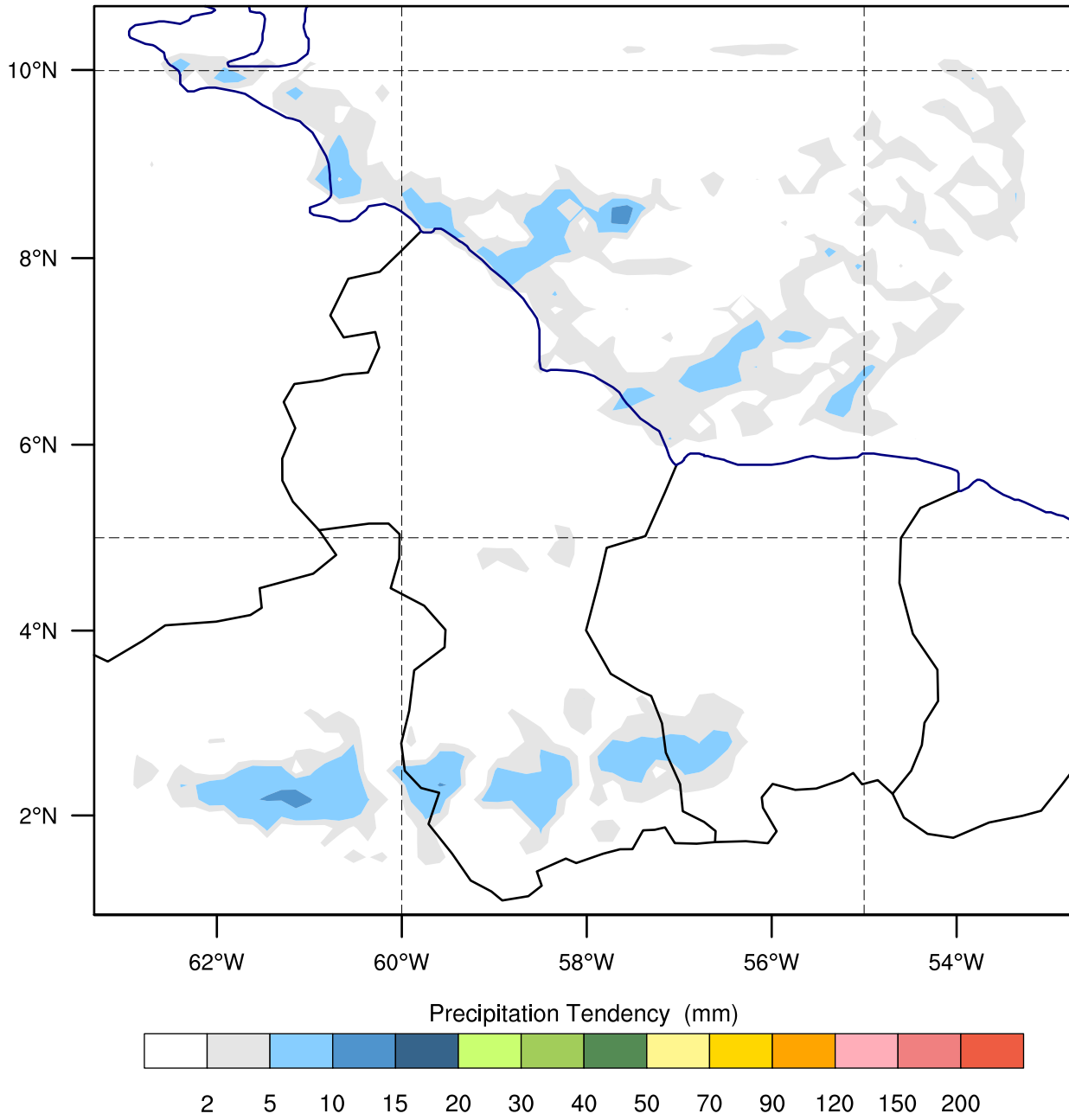
OUTPUT FROM WRF V3.7 MODEL

WE = 70 ; SN = 65 ; Levels = 30 ; Dis = 15km ; Phys Opt = 14 ; PBL Opt = 1 ; Cu Opt = 1

GUYANA HYDROMET SERVICE WRF

Init: 2017-07-07_00:00:00
Valid: 2017-07-10_12:00:00

Precipitation Tendency from 2017-07-10_09:00:00 to 2017-07-10_12:00:00 UTC time -4 for localtime (mm)



OUTPUT FROM WRF V3.7 MODEL
WE = 70 ; SN = 65 ; Levels = 30 ; Dis = 15km ; Phys Opt = 14 ; PBL Opt = 1 ; Cu Opt = 1